

For Research Use Only

OAT Monoclonal Matched Antibody Pair, PBS Only



Catalog Number:MP50109-1

Capture Antibody Information

Catalog Number:
68753-1-PBS

Host:
Mouse

Isotype:
IgG1

Purification Method:
Protein G purification

Clone ID:
1G2D5

Reactivity:
Human

Immunogen Catalog Number:
Ag34783

Conjugate:
Unconjugated

Full name:
ornithine aminotransferase (gyrate atrophy)

Gene ID:
4942

Detection Antibody Information

Catalog Number:
68753-2-PBS

Host:
Mouse

Isotype:
IgG1

Purification Method:
Protein G purification

Clone ID:
1C5H1

Reactivity:
Human

GenBank:
BC000964

Immunogen Catalog Number:
Ag34783

Conjugate:
Unconjugated

Full name:
ornithine aminotransferase (gyrate atrophy)

Gene ID:
4942

Applications

Tested Applications:
Cytometric bead array

Range:
0.098-100 ng/mL (Cytometric Bead Array)

Recommended Dilutions:
It is recommended that this reagent should be titrated in each testing system to obtain optimal results.

Product Information

MP50109-1 targets OAT in immunoassays as a matched antibody pair. Validated in Cytometric bead array.

Capture antibody: OAT Monoclonal antibody, PBS Only (Capture) 68753-1-PBS (1G2D5). 100 µg. Concentration 1 mg/ml.

Detection antibody: OAT Monoclonal antibody, PBS Only (Detector) 68753-2-PBS (1C5H1). 100 µg. Concentration 1 mg/ml.

Unconjugated mouse monoclonal antibody pair in PBS only (BSA and azide free) storage buffer at a concentration of 1 mg/mL, ready for conjugation.

Matched antibody pairs are designed for use in a variety of assays and platforms that require matched antibody pairs.

Antibody use should be optimized for each application and assay.

Storage

Storage:
Store at -80°C.
Storage buffer:
PBS only

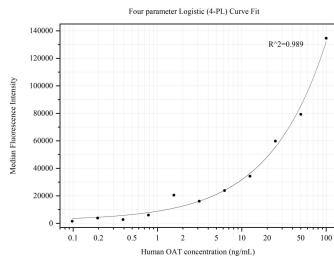
For technical support and original validation data for this product please contact:

T: 1 (888) 4PTGLAB (1-888-478-4522) (toll free in USA), or 1(312) 455-8498 (outside USA)

E: proteintech@ptglab.com
W: ptglab.com

This product is exclusively available under Proteintech Group brand and is not available to purchase from any other manufacturer.

Selected Validation Data



Cytometric bead array standard curve of MP50109-1, OAT Monoclonal Matched Antibody Pair, PBS Only. Capture antibody: 68753-1-PBS. Detection antibody: 68753-2-PBS. Standard: Ag34783. Range: 0.098-100 ng/mL.