

For Research Use Only

# FCGR3B Monoclonal Matched Antibody Pair, PBS Only



Catalog Number:MP50059-2

## Capture Antibody Information

**Catalog Number:**  
68677-2-PBS  
**Host:**  
Mouse  
**Isotype:**  
IgG2a  
**Purification Method:**  
Protein A purification

**Clone ID:**  
4E7D3  
**Reactivity:**  
Human

**Conjugate:**  
Unconjugated  
**Full name:**  
Fc fragment of IgG, low affinity IIIb, receptor (CD16b)  
**Gene ID:**  
2215

## Detection Antibody Information

**Catalog Number:**  
68677-3-PBS  
**Host:**  
Mouse  
**Isotype:**  
IgG1  
**Purification Method:**  
Protein G purification

**Clone ID:**  
2D9G2  
**Reactivity:**  
Human  
**GenBank:**  
NM\_000570

**Conjugate:**  
Unconjugated  
**Full name:**  
Fc fragment of IgG, low affinity IIIb, receptor (CD16b)  
**Gene ID:**  
2215

## Applications

**Tested Applications:**  
Cytometric bead array

**Range:**  
0.195-100 ng/mL (Cytometric Bead Array)

**Recommended Dilutions:**  
It is recommended that this reagent should be titrated in each testing system to obtain optimal results.

## Product Information

MP50059-2 targets FCGR3B in immunoassays as a matched antibody pair. Validated in Cytometric bead array.

Capture antibody: FCGR3B Monoclonal antibody, PBS Only (Capture/Detector) 68677-2-PBS (4E7D3). 100 µg. Concentration 1 mg/ml.

Detection antibody: FCGR3B Monoclonal antibody, PBS Only (Detector) 68677-3-PBS (2D9G2). 100 µg. Concentration 1 mg/ml.

Alternative FCGR3B matched antibody pairs: MP50059-1

Unconjugated mouse monoclonal antibody pair in PBS only (BSA and azide free) storage buffer at a concentration of 1 mg/mL, ready for conjugation.

Matched antibody pairs are designed for use in a variety of assays and platforms that require matched antibody pairs.

Antibody use should be optimized for each application and assay.

## Storage

**Storage:**  
Store at -80°C.  
**Storage buffer:**  
PBS only

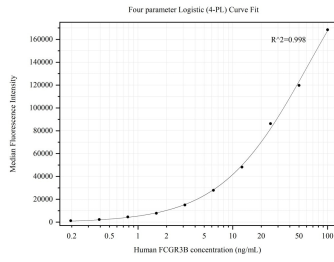
For technical support and original validation data for this product please contact:

T: 1 (888) 4PTGLAB (1-888-478-4522) (toll free in USA), or 1(312) 455-8498 (outside USA)

E: [proteintech@ptglab.com](mailto:proteintech@ptglab.com)  
W: [ptglab.com](http://ptglab.com)

**This product is exclusively available under Proteintech Group brand and is not available to purchase from any other manufacturer.**

## Selected Validation Data



Cytometric bead array standard curve of MP50059-2, FCGR3B Monoclonal Matched Antibody Pair, PBS Only. Capture antibody: 68677-2-PBS. Detection antibody: 68677-3-PBS. Standard:Eg0308. Range: 0.195-100 ng/mL.