

For Research Use Only

CEACAM8 Monoclonal Matched Antibody Pair, PBS Only

Catalog Number: **MP50039-1**

Capture Antibody Information

Catalog Number:
68683-1-PBS
Host:
Mouse
Isotype:
IgG1
Purification Method:
Protein A purification

Clone ID:
2B4F1
Reactivity:
human
Immunogen Catalog Number:
Eg32133

Conjugate:
Unconjugated
Full name:
carcinoembryonic antigen-related cell adhesion molecule 8
Gene ID:
1088

Detection Antibody Information

Catalog Number:
68683-2-PBS
Host:
Mouse
Isotype:
IgG1
Purification Method:
Protein A purification

Clone ID:
1E10E4
Reactivity:
human
GenBank:
BC026263
Immunogen Catalog Number:
Eg32133

Conjugate:
Unconjugated
Full name:
carcinoembryonic antigen-related cell adhesion molecule 8
Gene ID:
1088

Applications

Tested Applications:
Sandwich ELISA

Range:
46.88-3000 pg/mL (Sandwich ELISA)

Recommended Dilutions:
It is recommended that this reagent should be titrated in each testing system to obtain optimal results.

Product Information

MP50039-1 targets CEACAM8 in immunoassays as a matched antibody pair. Validated in Sandwich ELISA.

Capture antibody: CEACAM8 Monoclonal antibody, PBS Only (Capture) 68683-1-PBS (2B4F1). 100 µg. Concentration 1 mg/mL.

Detection antibody: CEACAM8 Monoclonal antibody, PBS Only (Detector) 68683-2-PBS (1E10E4). 100 µg. Concentration 1 mg/mL.

Unconjugated mouse monoclonal antibody pair in PBS only storage buffer at a concentration of 1 mg/mL, ready for conjugation.

Matched antibody pairs are designed for use in a variety of assays and platforms that require matched antibody pairs.

Antibody use should be optimized for each application and assay.

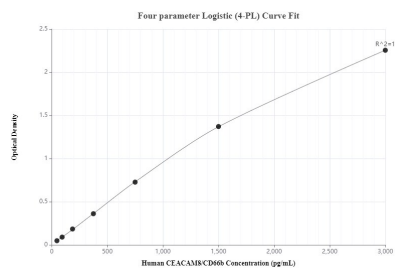
Storage

Storage:
Store at -80°C.
Storage buffer:
PBS only

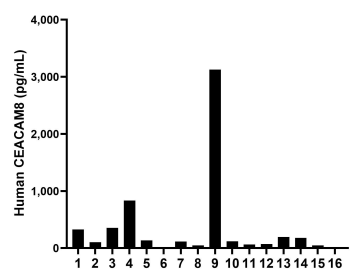
For technical support and original validation data for this product please contact:
T: 1 (888) 4PTGLAB (1-888-478-4522) (toll free in USA), or 1(312) 455-8498 (outside USA) E: proteintech@ptglab.com W: ptglab.com

This product is exclusively available under Proteintech Group brand and is not available to purchase from any other manufacturer.

Selected Validation Data



Sandwich ELISA standard curve of MP50039-1, CEACAM8 Monoclonal Matched Antibody Pair, PBS Only. Capture antibody: 68683-1-PBS. Detection antibody: 68683-2-PBS. Standard: Eg32133. Range: 46.88-3000 pg/mL



Serum of sixteen individual healthy human donors was measured. The CEACAM8 concentration of detected samples was determined to be 360.6 pg/mL with a range of 15.6-3,128.1 pg/mL