

KAP1 Recombinant Matched Antibody Pair, PBS Only

Catalog Number: **MP02033-2**

Capture Antibody Information

Catalog Number:

85693-1-PBS

Host:

Rabbit

Isotype:

IgG

Purification Method:

Protein A purification

Clone ID:

243043H7

Reactivity:

human

Immunogen Catalog Number:

Ag7350

Conjugate:

Unconjugated

Full name:

tripartite motif-containing 28

Gene ID:

10155

Detection Antibody Information

Catalog Number:

85693-2-PBS

Host:

Rabbit

Isotype:

IgG

Purification Method:

Protein A purification

Clone ID:

243043A7

Reactivity:

human

GenBank:

BC004978

Immunogen Catalog Number:

Ag7350

Conjugate:

Unconjugated

Full name:

tripartite motif-containing 28

Gene ID:

10155

Applications

Tested Applications:

Cytometric bead array, Sandwich ELISA

Range:

0.625-80 ng/mL (Cytometric Bead Array)
78.1-5000 pg/mL (Sandwich ELISA)

Recommended Dilutions:

It is recommended that this reagent should be titrated in each testing system to obtain optimal results.

Product Information

MP02033-2 targets KAP1 in immunoassays as a matched antibody pair. Validated in Cytometric bead array, Sandwich ELISA.

Capture antibody: KAP1 Recombinant antibody, PBS Only (Capture) 85693-1-PBS (243043H7). 100 µg. Concentration 1 mg/mL.

Detection antibody: KAP1 Recombinant antibody, PBS Only (Detector) 85693-2-PBS (243043A7). 100 µg. Concentration 1 mg/mL.

Unconjugated rabbit recombinant monoclonal antibody pair in PBS only storage buffer at a concentration of 1 mg/mL, ready for conjugation. Created using Proteintech's proprietary in-house recombinant technology. Recombinant production enables unrivalled batch-to-batch consistency, easy scale-up, and future security of supply.

Matched antibody pairs are designed for use in a variety of assays and platforms that require matched antibody pairs.

Antibody use should be optimized for each application and assay.

Storage

Storage:

Store at -80°C.

Storage buffer:

PBS only

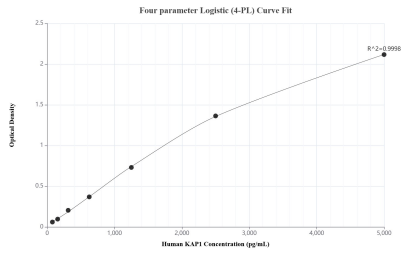
For technical support and original validation data for this product please contact:

T: 1 (888) 4PTGLAB (1-888-478-4522) (toll free in USA), or 1(312) 455-8498 (outside USA)

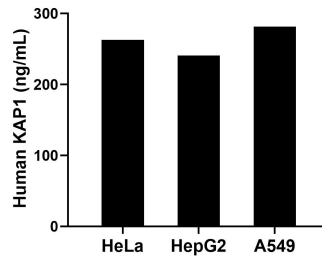
E: proteintech@ptglab.com
W: ptglab.com

This product is exclusively available under Proteintech Group brand and is not available to purchase from any other manufacturer.

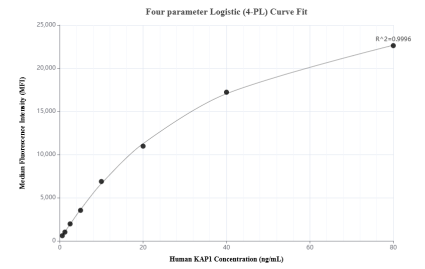
Selected Validation Data



Sandwich ELISA standard curve of MP02033-2, Human KAP1 Recombinant Matched Antibody Pair - PBS only. 85693-1-PBS was coated to a plate as the capture antibody and incubated with serial dilutions of standard Ag7350. 85693-2-PBS was HRP conjugated as the detection antibody. Range: 78.1-5000 pg/mL



The mean KAP1 concentration was determined to be 262.9 ng/mL in HeLa cell extract based on a 1.5 mg/mL extract load, 240.8 ng/mL in HepG2 cell extract based on a 1.8 mg/mL extract load and 281.5 ng/mL in A549 cell extract based on a 3.1 mg/mL extract load.



Cytometric bead array standard curve of MP02033-2, KAP1 Recombinant Matched Antibody Pair, PBS Only. Capture antibody: 85693-1-PBS. Detection antibody: 85693-2-PBS. Standard: Ag7350. Range: 0.625-80 ng/mL