

For Research Use Only

ILK Recombinant Matched Antibody Pair, PBS Only



Catalog Number:MP01945-3

Capture Antibody Information

Catalog Number:
85428-7-PBS

Host:
Rabbit

Isotype:
IgG

Purification Method:
Protein A purification

Clone ID:
242982B5

Reactivity:
human

Immunogen Catalog Number:
Ag3570

Conjugate:
Unconjugated

Full name:
integrin-linked kinase

Gene ID:
3611

Detection Antibody Information

Catalog Number:
85428-6-PBS

Host:
Rabbit

Isotype:
IgG

Purification Method:
Protein A purification

Clone ID:
242982B10

Reactivity:
human

GenBank:
BC001554

Immunogen Catalog Number:
Ag3570

Conjugate:
Unconjugated

Full name:
integrin-linked kinase

Gene ID:
3611

Applications

Tested Applications:
Sandwich ELISA

Range:
0.313-20 ng/mL (Sandwich ELISA)

Recommended Dilutions:
It is recommended that this reagent should be titrated in each testing system to obtain optimal results.

Product Information

MP01945-3 targets ILK in immunoassays as a matched antibody pair. Validated in Sandwich ELISA.

Capture antibody: ILK Recombinant antibody, PBS Only (Capture) 85428-7-PBS (242982B5). 100 µg. Concentration 1 mg/mL.

Detection antibody: ILK Recombinant antibody, PBS Only (Detector) 85428-6-PBS (242982B10). 100 µg. Concentration 1 mg/mL.

Unconjugated rabbit recombinant monoclonal antibody pair in PBS only storage buffer at a concentration of 1 mg/mL, ready for conjugation. Created using Proteintech's proprietary in-house recombinant technology. Recombinant production enables unrivalled batch-to-batch consistency, easy scale-up, and future security of supply.

Matched antibody pairs are designed for use in a variety of assays and platforms that require matched antibody pairs.

Antibody use should be optimized for each application and assay.

Storage

Storage:
Store at -80°C.
Storage buffer:
PBS only

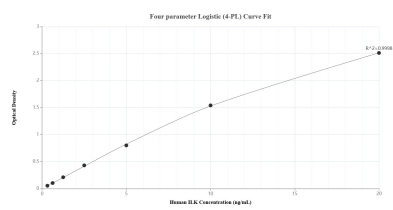
For technical support and original validation data for this product please contact:

T: 1 (888) 4PTGLAB (1-888-478-4522) (toll free in USA), or 1(312) 455-8498 (outside USA)

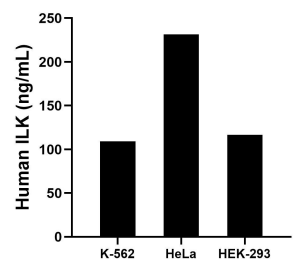
E: proteintech@ptglab.com
W: ptglab.com

This product is exclusively available under Proteintech Group brand and is not available to purchase from any other manufacturer.

Selected Validation Data



Sandwich ELISA standard curve of MP01945-3, Human ILK Recombinant Matched Antibody Pair - PBS only. 85428-7-PBS was coated to a plate as the capture antibody and incubated with serial dilutions of standard Ag3570. 85428-6-PBS was HRP conjugated as the detection antibody. Range: 0.313-20 ng/mL



The mean ILK concentration was determined to be 109.04 ng/mL in K-562 cell extract based on a 3.00 mg/mL extract load, 231.54 ng/mL in HeLa cell extract based on a 3.00 mg/mL extract load and 116.50 ng/mL in HEK-293 cell extract based on a 4.50 mg/mL extract load.