

For Research Use Only

LAMP3 Recombinant Matched Antibody Pair, PBS Only



Catalog Number:MP01929-1

Capture Antibody Information

Catalog Number:
85398-2-PBS

Host:
Rabbit

Isotype:
IgG

Purification Method:
Protein A purification

Clone ID:
242748C1

Reactivity:
human

Conjugate:
Unconjugated

Full name:
lysosomal-associated membrane protein 3

Gene ID:
27074

Detection Antibody Information

Catalog Number:
85398-3-PBS

Host:
Rabbit

Isotype:
IgG

Purification Method:
Protein A purification

Clone ID:
242748F3

Reactivity:
human

GenBank:
NM_014398.4

Conjugate:
Unconjugated

Full name:
lysosomal-associated membrane protein 3

Gene ID:
27074

Applications

Tested Applications:
Cytometric bead array, Sandwich ELISA

Range:
0.781-100 ng/mL (Cytometric Bead Array)
78.1-5000 pg/mL (Sandwich ELISA)

Recommended Dilutions:
It is recommended that this reagent should be titrated in each testing system to obtain optimal results.

Product Information

MP01929-1 targets LAMP3 in immunoassays as a matched antibody pair. Validated in Cytometric bead array, Sandwich ELISA.

Capture antibody: LAMP3/CD208 Recombinant antibody, PBS Only (Capture) 85398-2-PBS (242748C1). 100 µg. Concentration 1 mg/mL.

Detection antibody: LAMP3/CD208 Recombinant antibody, PBS Only (Detector) 85398-3-PBS (242748F3). 100 µg. Concentration 1 mg/mL.

Unconjugated rabbit recombinant monoclonal antibody pair in PBS only storage buffer at a concentration of 1 mg/mL, ready for conjugation. Created using Proteintech's proprietary in-house recombinant technology. Recombinant production enables unrivalled batch-to-batch consistency, easy scale-up, and future security of supply.

Matched antibody pairs are designed for use in a variety of assays and platforms that require matched antibody pairs.

Antibody use should be optimized for each application and assay.

Storage

Storage:
Store at -80°C.
Storage buffer:
PBS only

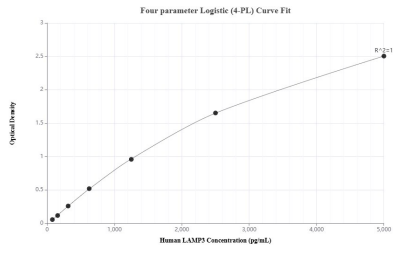
For technical support and original validation data for this product please contact:

T: 1 (888) 4PTGLAB (1-888-478-4522) (toll free in USA), or 1(312) 455-8498 (outside USA)

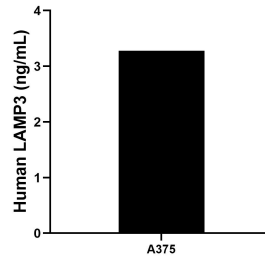
E: proteintech@ptglab.com
W: ptglab.com

This product is exclusively available under Proteintech Group brand and is not available to purchase from any other manufacturer.

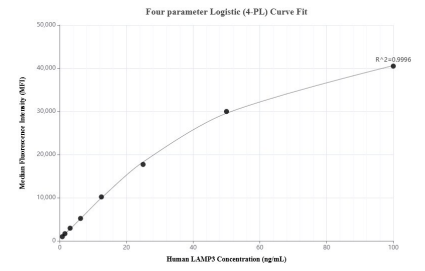
Selected Validation Data



Sandwich ELISA standard curve of MP01929-1, Human LAMP3 Recombinant Matched Antibody Pair - PBS only. 85398-2-PBS was coated to a plate as the capture antibody and incubated with serial dilutions of standard Eg3594. 85398-3-PBS was HRP conjugated as the detection antibody. Range: 78.1-5000 pg/mL



The mean LAMP3 concentration was determined to be 3.28 ng/mL in A375 cell extract based on a 1.8 mg/mL extract load.



Cytometric bead array standard curve of MP01929-1, LAMP3 Recombinant Matched Antibody Pair, PBS Only. Capture antibody: 85398-2-PBS. Detection antibody: 85398-3-PBS. Standard: Eg3594. Range: 0.781-100 ng/mL