

For Research Use Only

OAT Recombinant Matched Antibody Pair, PBS Only



Catalog Number:MP01910-3

Capture Antibody Information

Catalog Number:
85218-3-PBS
Host:
Rabbit
Isotype:
IgG
Purification Method:
Protein A purification

Clone ID:
242843G1
Reactivity:
human
Immunogen Catalog Number:
Ag9981

Conjugate:
Unconjugated
Full name:
ornithine aminotransferase (gyrate atrophy)
Gene ID:
4942

Detection Antibody Information

Catalog Number:
85218-5-PBS
Host:
Rabbit
Isotype:
IgG
Purification Method:
Protein A purification

Clone ID:
242843B1
Reactivity:
human
GenBank:
BC000964
Immunogen Catalog Number:
Ag9981

Conjugate:
Unconjugated
Full name:
ornithine aminotransferase (gyrate atrophy)
Gene ID:
4942

Applications

Tested Applications:
Sandwich ELISA

Range:
3.13-100 ng/mL (Sandwich ELISA)

Recommended Dilutions:
It is recommended that this reagent should be titrated in each testing system to obtain optimal results.

Product Information

MP01910-3 targets OAT in immunoassays as a matched antibody pair. Validated in Sandwich ELISA.

Capture antibody: OAT Recombinant antibody, PBS Only (Capture) 85218-3-PBS (242843G1). 100 µg. Concentration 1 mg/mL.

Detection antibody: OAT Recombinant antibody, PBS Only (Detector) 85218-5-PBS (242843B1). 100 µg. Concentration 1 mg/mL.

Unconjugated rabbit recombinant monoclonal antibody pair in PBS only storage buffer at a concentration of 1 mg/mL, ready for conjugation. Created using Proteintech's proprietary in-house recombinant technology. Recombinant production enables unrivalled batch-to-batch consistency, easy scale-up, and future security of supply.

Matched antibody pairs are designed for use in a variety of assays and platforms that require matched antibody pairs.

Antibody use should be optimized for each application and assay.

Storage

Storage:
Store at -80°C.
Storage buffer:
PBS only

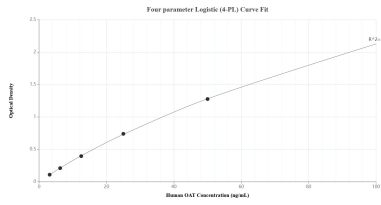
For technical support and original validation data for this product please contact:

T: 1 (888) 4PTGLAB (1-888-478-4522) (toll free in USA), or 1(312) 455-8498 (outside USA)

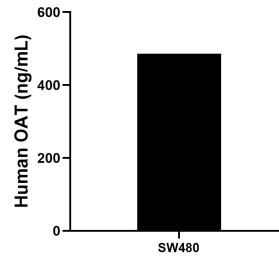
E: proteintech@ptglab.com
W: ptglab.com

This product is exclusively available under Proteintech Group brand and is not available to purchase from any other manufacturer.

Selected Validation Data



Sandwich ELISA standard curve of MP01910-3, Human OAT Recombinant Matched Antibody Pair - PBS only. 85218-3-PBS was coated to a plate as the capture antibody and incubated with serial dilutions of standard Ag9981. 85218-5-PBS was HRP conjugated as the detection antibody. Range: 3.13-100 ng/mL



The mean OAT concentration was determined to be 485.72 ng/mL in SW480 cell extract based on a 1.50 mg/mL extract load.