

For Research Use Only

# NUP214 Recombinant Matched Antibody Pair, PBS Only



Catalog Number:MP01882-3

## Capture Antibody Information

Catalog Number:  
85161-2-PBS

Host:  
Rabbit

Isotype:  
IgG

Purification Method:  
Protein A purification

Clone ID:  
242782C7

Reactivity:  
human

Immunogen Catalog Number:  
Ag21377

Conjugate:  
Unconjugated

Full name:  
nucleoporin 214kDa

Gene ID:  
8021

## Detection Antibody Information

Catalog Number:  
85161-5-PBS

Host:  
Rabbit

Isotype:  
IgG

Purification Method:  
Protein A purification

Clone ID:  
242782G10

Reactivity:  
human

GenBank:  
BC105998

Immunogen Catalog Number:  
Ag21377

Conjugate:  
Unconjugated

Full name:  
nucleoporin 214kDa

Gene ID:  
8021

## Applications

Tested Applications:  
Sandwich ELISA

Range:  
1.56-100 ng/mL (Sandwich ELISA)

Recommended Dilutions:  
It is recommended that this reagent should be titrated in each testing system to obtain optimal results.

## Product Information

MP01882-3 targets NUP214 in immunoassays as a matched antibody pair. Validated in Sandwich ELISA.

Capture antibody: NUP214 Recombinant antibody, PBS Only (Capture) 85161-2-PBS (242782C7). 100 µg. Concentration 1 mg/mL.

Detection antibody: NUP214 Recombinant antibody, PBS Only (Detector) 85161-5-PBS (242782G10). 100 µg. Concentration 1 mg/mL.

Unconjugated rabbit recombinant monoclonal antibody pair in PBS only storage buffer at a concentration of 1 mg/mL, ready for conjugation. Created using Proteintech's proprietary in-house recombinant technology. Recombinant production enables unrivalled batch-to-batch consistency, easy scale-up, and future security of supply.

Matched antibody pairs are designed for use in a variety of assays and platforms that require matched antibody pairs.

Antibody use should be optimized for each application and assay.

## Storage

Storage:  
Store at -80°C.  
Storage buffer:  
PBS only

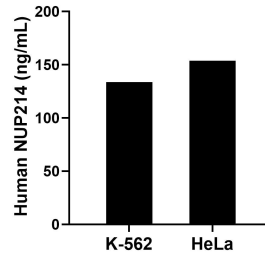
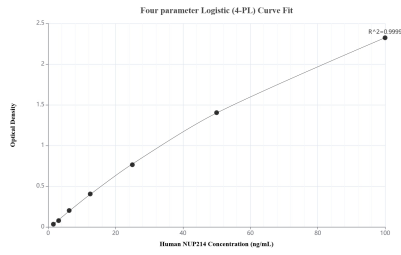
For technical support and original validation data for this product please contact:

T: 1 (888) 4PTGLAB (1-888-478-4522) (toll free in USA), or 1(312) 455-8498 (outside USA)

E: [proteintech@ptglab.com](mailto:proteintech@ptglab.com)  
W: [ptglab.com](http://ptglab.com)

This product is exclusively available under Proteintech Group brand and is not available to purchase from any other manufacturer.

## Selected Validation Data



Sandwich ELISA standard curve of MP01882-3, Human NUP214 Recombinant Matched Antibody Pair - PBS only. 85161-2-PBS was coated to a plate as the capture antibody and incubated with serial dilutions of standard Ag21377. 85161-5-PBS was HRP conjugated as the detection antibody. Range: 1.56-100 ng/mL.

The mean NUP214 concentration was determined to be 133.70 ng/mL in K-562 cell extract based on a 2.50 mg/mL extract load and 153.72 ng/mL in HeLa cell extract based on a 1.50 mg/mL extract load.