

For Research Use Only

# SOCS3 Recombinant Matched Antibody Pair, PBS Only



Catalog Number:MP01874-3

## Capture Antibody Information

Catalog Number:  
85155-1-PBS

Host:  
Rabbit

Isotype:  
IgG

Purification Method:  
Protein A purification

Clone ID:  
242809A1

Reactivity:  
human

Immunogen Catalog Number:  
Ag5170

Conjugate:  
Unconjugated

Full name:  
suppressor of cytokine signaling 3

Gene ID:  
9021

## Detection Antibody Information

Catalog Number:  
85155-3-PBS

Host:  
Rabbit

Isotype:  
IgG

Purification Method:  
Protein A purification

Clone ID:  
242809F12

Reactivity:  
human

GenBank:  
BC060858

Immunogen Catalog Number:  
Ag5170

Conjugate:  
Unconjugated

Full name:  
suppressor of cytokine signaling 3

Gene ID:  
9021

## Applications

Tested Applications:  
Sandwich ELISA

Range:  
0.625-40 ng/mL (Sandwich ELISA)

Recommended Dilutions:  
It is recommended that this reagent should be titrated in each testing system to obtain optimal results.

## Product Information

MP01874-3 targets SOCS3 in immunoassays as a matched antibody pair. Validated in Sandwich ELISA.

Capture antibody: SOCS3 Recombinant antibody, PBS Only (Capture/Detector) 85155-1-PBS (242809A1). 100 µg. Concentration 1 mg/mL.

Detection antibody: SOCS3 Recombinant antibody, PBS Only (Detector) 85155-3-PBS (242809F12). 100 µg. Concentration 1 mg/mL.

Unconjugated rabbit recombinant monoclonal antibody pair in PBS only storage buffer at a concentration of 1 mg/mL, ready for conjugation. Created using Proteintech's proprietary in-house recombinant technology. Recombinant production enables unrivalled batch-to-batch consistency, easy scale-up, and future security of supply.

Matched antibody pairs are designed for use in a variety of assays and platforms that require matched antibody pairs.

Antibody use should be optimized for each application and assay.

## Storage

Storage:  
Store at -80°C.  
Storage buffer:  
PBS only

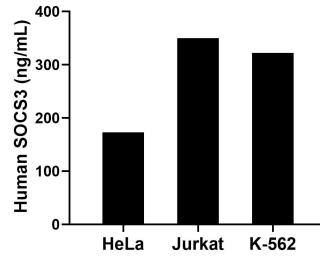
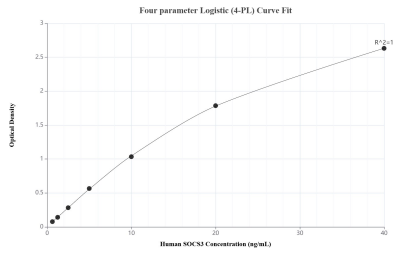
For technical support and original validation data for this product please contact:

T: 1 (888) 4PTGLAB (1-888-478-4522) (toll free in USA), or 1(312) 455-8498 (outside USA)

E: [proteintech@ptglab.com](mailto:proteintech@ptglab.com)  
W: [ptglab.com](http://ptglab.com)

This product is exclusively available under Proteintech Group brand and is not available to purchase from any other manufacturer.

## Selected Validation Data



Sandwich ELISA standard curve of MP01874-3, Human SOCS3 Recombinant Matched Antibody Pair - PBS only. 85155-1-PBS was coated to a plate as the capture antibody and incubated with serial dilutions of standard Ag5170. 85155-3-PBS was HRP conjugated as the detection antibody. Range: 0.625-40 ng/mL.

The mean SOCS3 concentration was determined to be 172.6 pg/mL in HeLa cell extract based on a 1.5 mg/mL extract load, 350.0 pg/mL in Jurkat cell extract based on a 3.1 mg/mL extract load and 322.1 pg/mL in K-562 cell extract based on a 2.5 mg/mL extract load.