

For Research Use Only

Adiponectin receptor Recombinant Matched Antibody Pair, PBS Only



Catalog Number:MP01830-2

Capture Antibody Information

Catalog Number:

85121-2-PBS

Host:

Rabbit

Isotype:

IgG

Purification Method:

Protein A purification

Clone ID:

242777G11

Reactivity:

human

Immunogen Catalog Number:

Ag5744

Conjugate:

Unconjugated

Full name:

adiponectin receptor 2

Gene ID:

79602

Detection Antibody Information

Catalog Number:

85121-1-PBS

Host:

Rabbit

Isotype:

IgG

Purification Method:

Protein A purification

Clone ID:

242777B1

Reactivity:

human

GenBank:

BC051858

Immunogen Catalog Number:

Ag5744

Conjugate:

Unconjugated

Full name:

adiponectin receptor 2

Gene ID:

79602

Applications

Tested Applications:

Cytometric bead array, Sandwich ELISA

Range:

3.125-200 ng/mL (Cytometric Bead Array)
0.391-25 ng/mL (Sandwich ELISA)

Recommended Dilutions:

It is recommended that this reagent should be titrated in each testing system to obtain optimal results.

Product Information

MP01830-2 targets Adiponectin receptor in immunoassays as a matched antibody pair. Validated in Cytometric bead array, Sandwich ELISA.

Capture antibody: ADIPOR2 Recombinant antibody, PBS Only (Capture) 85121-2-PBS (242777G11). 100 µg. Concentration 1 mg/mL.

Detection antibody: ADIPOR2 Recombinant antibody, PBS Only (Detector) 85121-1-PBS (242777B1). 100 µg. Concentration 1 mg/mL.

Unconjugated rabbit recombinant monoclonal antibody pair in PBS only storage buffer at a concentration of 1 mg/mL, ready for conjugation. Created using Proteintech's proprietary in-house recombinant technology. Recombinant production enables unrivalled batch-to-batch consistency, easy scale-up, and future security of supply.

Matched antibody pairs are designed for use in a variety of assays and platforms that require matched antibody pairs.

Antibody use should be optimized for each application and assay.

Storage

Storage:

Store at -80°C.

Storage buffer:

PBS only

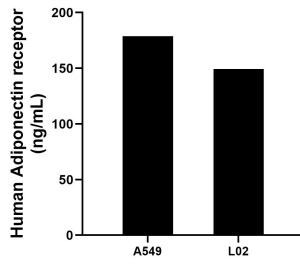
For technical support and original validation data for this product please contact:

T: 1 (888) 4PTGLAB (1-888-478-4522) (toll free in USA), or 1(312) 455-8498 (outside USA)

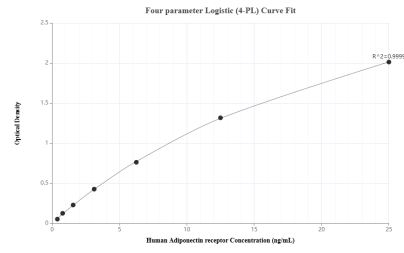
E: proteintech@ptglab.com
W: ptglab.com

This product is exclusively available under Proteintech Group brand and is not available to purchase from any other manufacturer.

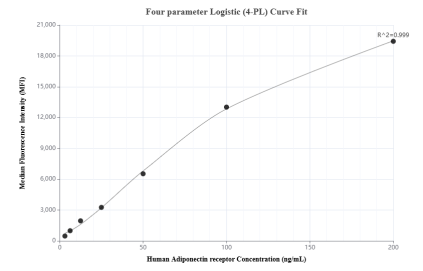
Selected Validation Data



The mean Adiponectin receptor concentration was determined to be 178.84 ng/mL in A549 cell extract based on a 1.5 mg/mL extract load and 149.38 ng/mL in L02 cell extract based on a 1.3 mg/mL extract load.



Sandwich ELISA standard curve of MP01830-2, Human Adiponectin receptor Recombinant Matched Antibody Pair - PBS only. 85121-2-PBS was coated to a plate as the capture antibody and incubated with serial dilutions of standard Ag5744. 85121-1-PBS was HRP conjugated as the detection antibody. Range: 0.391-25 ng/mL



Cytometric bead array standard curve of MP01830-2, Adiponectin receptor Recombinant Matched Antibody Pair, PBS Only. Capture antibody: 85121-2-PBS. Detection antibody: 85121-1-PBS. Standard: Ag5744. Range: 3.125-200 ng/mL