

For Research Use Only

CD27 Recombinant Matched Antibody Pair, PBS Only



Catalog Number:MP01811-3

Capture Antibody Information

Catalog Number:
85066-3-PBS

Host:
Rabbit

Isotype:
IgG

Purification Method:
Protein A purification

Clone ID:
242731G8

Reactivity:
human

Conjugate:
Unconjugated

Full name:
CD27 molecule

Gene ID:
939

Detection Antibody Information

Catalog Number:
85066-1-PBS

Host:
Rabbit

Isotype:
IgG

Purification Method:
Protein A purification

Clone ID:
242731B7

Reactivity:
human

GenBank:
BC012160

Conjugate:
Unconjugated

Full name:
CD27 molecule

Gene ID:
939

Applications

Tested Applications:
Sandwich ELISA

Range:
0.156-10 ng/mL (Sandwich ELISA)

Recommended Dilutions:
It is recommended that this reagent should be titrated in each testing system to obtain optimal results.

Product Information

MP01811-3 targets CD27 in immunoassays as a matched antibody pair. Validated in Sandwich ELISA.

Capture antibody: CD27 Recombinant antibody, PBS Only (Capture) 85066-3-PBS (242731G8). 100 µg. Concentration 1 mg/mL.

Detection antibody: CD27 Recombinant antibody, PBS Only (Detector) 85066-1-PBS (242731B7). 100 µg. Concentration 1 mg/mL.

Unconjugated rabbit recombinant monoclonal antibody pair in PBS only storage buffer at a concentration of 1 mg/mL, ready for conjugation. Created using Proteintech's proprietary in-house recombinant technology. Recombinant production enables unrivalled batch-to-batch consistency, easy scale-up, and future security of supply.

Matched antibody pairs are designed for use in a variety of assays and platforms that require matched antibody pairs.

Antibody use should be optimized for each application and assay.

Storage

Storage:
Store at -80°C.
Storage buffer:
PBS only

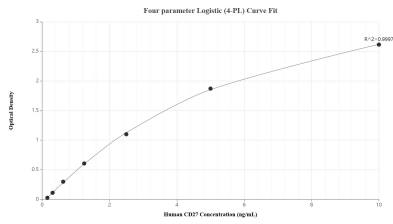
For technical support and original validation data for this product please contact:

T: 1 (888) 4PTGLAB (1-888-478-4522) (toll free in USA), or 1(312) 455-8498 (outside USA)

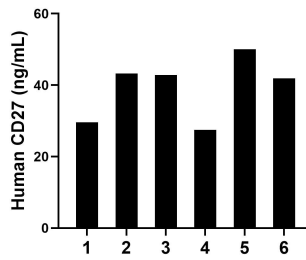
E: proteintech@ptglab.com
W: ptglab.com

This product is exclusively available under Proteintech Group brand and is not available to purchase from any other manufacturer.

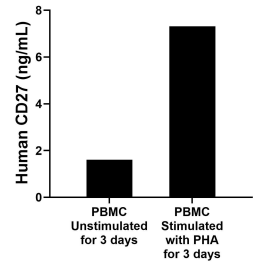
Selected Validation Data



Sandwich ELISA standard curve of MP01811-3, Human CD27 Recombinant Matched Antibody Pair - PBS only. 85066-3-PBS was coated to a plate as the capture antibody and incubated with serial dilutions of standard Eg1644. 85066-1-PBS was HRP conjugated as the detection antibody. Range: 0.156-10 ng/mL.



Serum of six individual healthy human donors was measured. The CD27 concentration of detected samples was determined to be 39.19 ng/mL with a range of 27.45-50.05 ng/mL.



Human peripheral blood mononuclear cells (PBMC) were cultured unstimulated or stimulated with 10 µg/mL PHA for 3 days. The mean CD27 concentration was determined to be 1.61 ng/mL in unstimulated PBMC supernatant, 7.31 ng/mL in PHA stimulated PBMC supernatant.