

For Research Use Only

# Mouse Fetuin A/AHSG Recombinant Matched Antibody Pair, PBS Only



Catalog Number:MP01802-1

## Capture Antibody Information

**Catalog Number:**  
85085-1-PBS  
**Host:**  
Rabbit  
**Isotype:**  
IgG  
**Purification Method:**  
Protein A purification

**Clone ID:**  
242732A11  
**Reactivity:**  
mouse

**Conjugate:**  
Unconjugated  
**Full name:**  
alpha-2-HS-glycoprotein  
**Gene ID:**  
11625

## Detection Antibody Information

**Catalog Number:**  
85085-2-PBS  
**Host:**  
Rabbit  
**Isotype:**  
IgG  
**Purification Method:**  
Protein A purification

**Clone ID:**  
242732E5  
**Reactivity:**  
mouse  
**GenBank:**  
NM\_013465.2

**Conjugate:**  
Unconjugated  
**Full name:**  
alpha-2-HS-glycoprotein  
**Gene ID:**  
11625

## Applications

**Tested Applications:**  
Cytometric bead array, Sandwich ELISA

**Range:**  
0.313-40 ng/mL (Cytometric Bead Array)  
39.1-2500 pg/mL (Sandwich ELISA)

**Recommended Dilutions:**  
It is recommended that this reagent should be titrated in each testing system to obtain optimal results.

## Product Information

MP01802-1 targets Fetuin A/AHSG in immunoassays as a matched antibody pair. Validated in Cytometric bead array, Sandwich ELISA.

Capture antibody: Mouse Fetuin A/AHSG Recombinant antibody, PBS Only (Capture) 85085-1-PBS (242732A11). 100 µg. Concentration 1 mg/mL.

Detection antibody: Mouse Fetuin A/AHSG Recombinant antibody, PBS Only (Detector) 85085-2-PBS (242732E5). 100 µg. Concentration 1 mg/mL.

Unconjugated rabbit recombinant monoclonal antibody pair in PBS only storage buffer at a concentration of 1 mg/mL, ready for conjugation. Created using Proteintech's proprietary in-house recombinant technology. Recombinant production enables unrivalled batch-to-batch consistency, easy scale-up, and future security of supply.

Matched antibody pairs are designed for use in a variety of assays and platforms that require matched antibody pairs.

Antibody use should be optimized for each application and assay.

## Storage

**Storage:**  
Store at -80°C.  
**Storage buffer:**  
PBS only

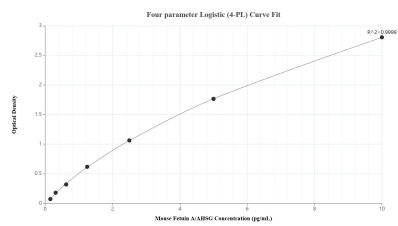
For technical support and original validation data for this product please contact:

T: 1 (888) 4PTGLAB (1-888-478-4522) (toll free in USA), or 1(312) 455-8498 (outside USA)

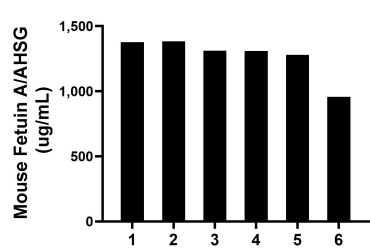
E: [proteintech@ptglab.com](mailto:proteintech@ptglab.com)  
W: [ptglab.com](http://ptglab.com)

This product is exclusively available under Proteintech Group brand and is not available to purchase from any other manufacturer.

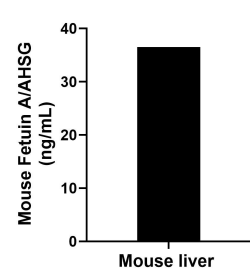
Selected Validation Data



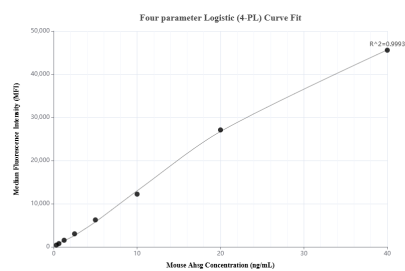
Sandwich ELISA standard curve of MP01802-1, Mouse Fetuin A/AHSG Recombinant Matched Antibody Pair - PBS only. 85085-1-PBS was coated to a plate as the capture antibody and incubated with serial dilutions of standard Eg3151. 85085-2-PBS was HRP conjugated as the detection antibody. Range: 39.1-2500 pg/mL



Serum of six mice was measured. The Fetuin A/AHSG concentration of detected samples was determined to be 1,270.1 ug/mL with a range of 956.9 -1,383.5 ug/mL.



One mouse liver was cultured for 18 hours in RPMI 1640 supplemented with 10% fetal bovine serum, 50 µM β-mercaptoethanol, 2 mM L-glutamine, and 100 µg/mL of streptomycin sulfate. An aliquot of the cell culture supernatant was removed, assayed for mouse Fetuin A/AHSG and measured 36.5 ng/mL



Cytometric bead array standard curve of MP01802-1, MOUSE Ahsg Recombinant Matched Antibody Pair, PBS Only. Capture antibody: 85085-1-PBS. Detection antibody: 85085-2-PBS. Standard: Eg3151. Range: 0.313-40 ng/mL