

SP3 Recombinant Matched Antibody Pair, PBS Only

Catalog Number: **MP01797-3**

Capture Antibody Information

Catalog Number:

85050-2-PBS

Host:

Rabbit

Isotype:

IgG

Purification Method:

Protein A purification

Clone ID:

242556C7

Reactivity:

human

Immunogen Catalog Number:

Ag25082

Conjugate:

Unconjugated

Full name:

Sp3 transcription factor

Gene ID:

6670

Detection Antibody Information

Catalog Number:

85050-4-PBS

Host:

Rabbit

Isotype:

IgG

Purification Method:

Protein A purification

Clone ID:

242556A3

Reactivity:

human

GenBank:

BC126414

Immunogen Catalog Number:

Ag25082

Conjugate:

Unconjugated

Full name:

Sp3 transcription factor

Gene ID:

6670

Applications

Tested Applications:

Sandwich ELISA

Range:

0.313-20 ng/mL (Sandwich ELISA)

Recommended Dilutions:

It is recommended that this reagent should be titrated in each testing system to obtain optimal results.

Product Information

MP01797-3 targets SP3 in immunoassays as a matched antibody pair. Validated in Sandwich ELISA.

Capture antibody: SP3 Recombinant antibody, PBS Only (Capture) 85050-2-PBS (242556C7). 100 µg. Concentration 1 mg/mL.

Detection antibody: SP3 Recombinant antibody, PBS Only (Detector) 85050-4-PBS (242556A3). 100 µg. Concentration 1 mg/mL.

Unconjugated rabbit recombinant monoclonal antibody pair in PBS only storage buffer at a concentration of 1 mg/mL, ready for conjugation. Created using Proteintech's proprietary in-house recombinant technology. Recombinant production enables unrivalled batch-to-batch consistency, easy scale-up, and future security of supply.

Matched antibody pairs are designed for use in a variety of assays and platforms that require matched antibody pairs.

Antibody use should be optimized for each application and assay.

Storage

Storage:

Store at -80°C.

Storage buffer:

PBS only

For technical support and original validation data for this product please contact:

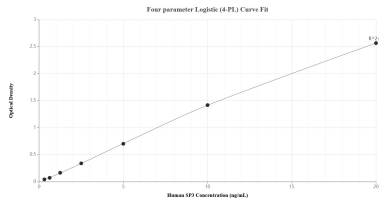
T: 1 (888) 4PTGLAB (1-888-478-4522) (toll free in USA), or 1(312) 455-8498 (outside USA)

E: proteintech@ptglab.com

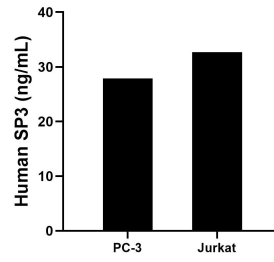
W: ptglab.com

This product is exclusively available under Proteintech Group brand and is not available to purchase from any other manufacturer.

Selected Validation Data



Sandwich ELISA standard curve of MP01797-3, Human SP3 Recombinant Matched Antibody Pair - PBS only. 85050-2-PBS was coated to a plate as the capture antibody and incubated with serial dilutions of standard Ag25082. 85050-4-PBS was HRP conjugated as the detection antibody. Range: 0.313-20 ng/mL.



The mean SP3 concentration was determined to be 27.89 ng/mL in PC-3 cell extract based on a 2.50 mg/mL extract load and 32.69 ng/mL in Jurkat cell extract based on a 2.00 mg/mL extract load.