

For Research Use Only

# MLYCD Recombinant Matched Antibody Pair, PBS Only



Catalog Number:MP01785-2

## Capture Antibody Information

Catalog Number:  
85080-1-PBS

Host:  
Rabbit

Isotype:  
IgG

Purification Method:  
Protein A purification

Clone ID:  
242753D7

Reactivity:  
human

Immunogen Catalog Number:  
Ag7334

Conjugate:  
Unconjugated

Full name:  
malonyl-CoA decarboxylase

Gene ID:  
23417

## Detection Antibody Information

Catalog Number:  
85080-2-PBS

Host:  
Rabbit

Isotype:  
IgG

Purification Method:  
Protein A purification

Clone ID:  
242753E4

Reactivity:  
human

GenBank:  
BC000286

Immunogen Catalog Number:  
Ag7334

Conjugate:  
Unconjugated

Full name:  
malonyl-CoA decarboxylase

Gene ID:  
23417

## Applications

Tested Applications:  
Cytometric bead array

Range:  
0.781-100 ng/mL (Cytometric Bead Array)

Recommended Dilutions:  
It is recommended that this reagent should be titrated in each testing system to obtain optimal results.

## Product Information

MP01785-2 targets MLYCD in immunoassays as a matched antibody pair. Validated in Cytometric bead array.

Capture antibody: MLYCD Recombinant antibody, PBS Only (Capture) 85080-1-PBS (242753D7). 100 µg. Concentration 1 mg/ml.

Detection antibody: MLYCD Recombinant antibody, PBS Only (Detector) 85080-2-PBS (242753E4). 100 µg. Concentration 1 mg/ml.

Unconjugated rabbit recombinant monoclonal antibody pair in PBS only storage buffer at a concentration of 1 mg/mL, ready for conjugation. Created using Proteintech's proprietary in-house recombinant technology. Recombinant production enables unrivalled batch-to-batch consistency, easy scale-up, and future security of supply.

Matched antibody pairs are designed for use in a variety of assays and platforms that require matched antibody pairs.

Antibody use should be optimized for each application and assay.

## Storage

Storage:  
Store at -80°C.  
Storage buffer:  
PBS only

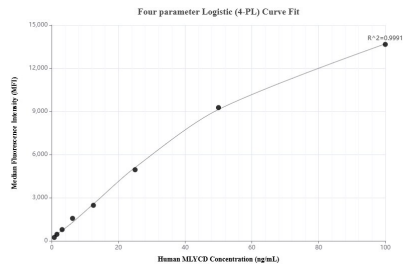
For technical support and original validation data for this product please contact:

T: 1 (888) 4PTGLAB (1-888-478-4522) (toll free in USA), or 1(312) 455-8498 (outside USA)

E: [proteintech@ptglab.com](mailto:proteintech@ptglab.com)  
W: [ptglab.com](http://ptglab.com)

This product is exclusively available under Proteintech Group brand and is not available to purchase from any other manufacturer.

## Selected Validation Data



Cytometric bead array standard curve of MP01785-2, MLYCD Recombinant Matched Antibody Pair, PBS Only. Capture antibody: 85080-1-PBS. Detection antibody: 85080-2-PBS. Standard: Ag7334. Range: 0.781-100 ng/mL.