

For Research Use Only

# ROD1 Recombinant Matched Antibody Pair, PBS Only



Catalog Number:MP01782-2

## Capture Antibody Information

Catalog Number:  
85061-1-PBS

Host:  
Rabbit

Isotype:  
IgG

Purification Method:  
Protein A purification

Clone ID:  
242641A6

Reactivity:  
human

Immunogen Catalog Number:  
Ag5172

Conjugate:  
Unconjugated

Full name:  
ROD1 regulator of differentiation 1 (S. pombe)

Gene ID:  
9991

## Detection Antibody Information

Catalog Number:  
85061-2-PBS

Host:  
Rabbit

Isotype:  
IgG

Purification Method:  
Protein A purification

Clone ID:  
242641C4

Reactivity:  
human

GenBank:  
BC044585

Immunogen Catalog Number:  
Ag5172

Conjugate:  
Unconjugated

Full name:  
ROD1 regulator of differentiation 1 (S. pombe)

Gene ID:  
9991

## Applications

Tested Applications:  
Cytometric bead array, Sandwich ELISA

Range:  
1.563-100 ng/mL (Cytometric Bead Array)  
1.56-50 ng/mL (Sandwich ELISA)

Recommended Dilutions:  
It is recommended that this reagent should be titrated in each testing system to obtain optimal results.

## Product Information

MP01782-2 targets ROD1 in immunoassays as a matched antibody pair. Validated in Cytometric bead array, Sandwich ELISA.

Capture antibody: ROD1 Recombinant antibody, PBS Only (Capture) 85061-1-PBS (242641A6). 100 µg. Concentration 1 mg/mL.

Detection antibody: ROD1 Recombinant antibody, PBS Only (Detector) 85061-2-PBS (242641C4). 100 µg. Concentration 1 mg/mL.

Unconjugated rabbit recombinant monoclonal antibody pair in PBS only storage buffer at a concentration of 1 mg/mL, ready for conjugation. Created using Proteintech's proprietary in-house recombinant technology. Recombinant production enables unrivalled batch-to-batch consistency, easy scale-up, and future security of supply.

Matched antibody pairs are designed for use in a variety of assays and platforms that require matched antibody pairs.

Antibody use should be optimized for each application and assay.

## Storage

Storage:  
Store at -80°C.  
Storage buffer:  
PBS only

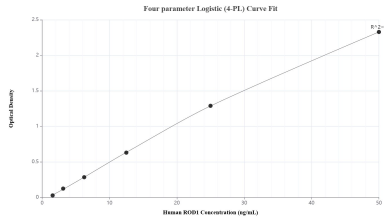
For technical support and original validation data for this product please contact:

T: 1 (888) 4PTGLAB (1-888-478-4522) (toll free in USA), or 1(312) 455-8498 (outside USA)

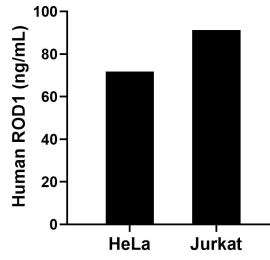
E: [proteintech@ptglab.com](mailto:proteintech@ptglab.com)  
W: [ptglab.com](http://ptglab.com)

This product is exclusively available under Proteintech Group brand and is not available to purchase from any other manufacturer.

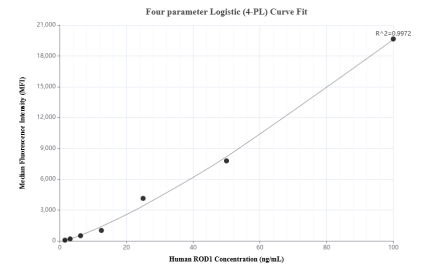
## Selected Validation Data



Sandwich ELISA standard curve of MP01782-2, Human ROD1 Recombinant Matched Antibody Pair - PBS only. 85061-1-PBS was coated to a plate as the capture antibody and incubated with serial dilutions of standard Ag5172. 85061-2-PBS was HRP conjugated as the detection antibody. Range: 1.56-50 ng/mL.



The mean ROD1 concentration was determined to be 71.78 ng/mL in HeLa cell extract based on a 1.50 mg/mL extract load and 91.18 ng/mL in Jurkat cell extract based on a 2.00 mg/mL extract load.



Cytometric bead array standard curve of MP01782-2, ROD1 Recombinant Matched Antibody Pair, PBS Only. Capture antibody: 85061-1-PBS. Detection antibody: 85061-2-PBS. Standard: Ag5172. Range: 1.563-100 ng/mL.