

For Research Use Only

S1PR1/EDG1 Recombinant Matched Antibody Pair, PBS Only



Catalog Number:MP01781-3

Capture Antibody Information

Catalog Number:
85059-4-PBS

Host:
Rabbit

Isotype:
IgG

Purification Method:
Protein A purification

Clone ID:
242592C4

Reactivity:
human

Immunogen Catalog Number:
Ag28083

Conjugate:
Unconjugated

Full name:
sphingosine-1-phosphate receptor 1

Gene ID:
1901

Detection Antibody Information

Catalog Number:
85059-2-PBS

Host:
Rabbit

Isotype:
IgG

Purification Method:
Protein A purification

Clone ID:
242592D3

Reactivity:
human

GenBank:
BC018650

Immunogen Catalog Number:
Ag28083

Conjugate:
Unconjugated

Full name:
sphingosine-1-phosphate receptor 1

Gene ID:
1901

Applications

Tested Applications:
Sandwich ELISA

Range:
0.156-10 ng/mL (Sandwich ELISA)

Recommended Dilutions:
It is recommended that this reagent should be titrated in each testing system to obtain optimal results.

Product Information

MP01781-3 targets S1PR1/EDG1 in immunoassays as a matched antibody pair. Validated in Sandwich ELISA.

Capture antibody: S1PR1 Recombinant antibody, PBS Only (Capture) 85059-4-PBS (242592C4). 100 µg. Concentration 1 mg/mL.

Detection antibody: S1PR1 Recombinant antibody, PBS Only (Capture/Detector) 85059-2-PBS (242592D3). 100 µg. Concentration 1 mg/mL.

Unconjugated rabbit recombinant monoclonal antibody pair in PBS only storage buffer at a concentration of 1 mg/mL, ready for conjugation. Created using Proteintech's proprietary in-house recombinant technology. Recombinant production enables unrivalled batch-to-batch consistency, easy scale-up, and future security of supply.

Matched antibody pairs are designed for use in a variety of assays and platforms that require matched antibody pairs.

Antibody use should be optimized for each application and assay.

Storage

Storage:
Store at -80°C.
Storage buffer:
PBS only

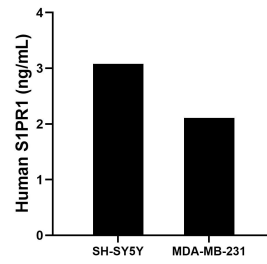
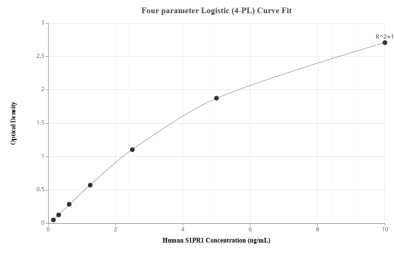
For technical support and original validation data for this product please contact:

T: 1 (888) 4PTGLAB (1-888-478-4522) (toll free in USA), or 1(312) 455-8498 (outside USA)

E: proteintech@ptglab.com
W: ptglab.com

This product is exclusively available under Proteintech Group brand and is not available to purchase from any other manufacturer.

Selected Validation Data



Sandwich ELISA standard curve of MP01781-3, Human S1PR1/EDG1 Recombinant Matched Antibody Pair - PBS only. 85059-4-PBS was coated to a plate as the capture antibody and incubated with serial dilutions of standard Ag28083. 85059-2-PBS was HRP conjugated as the detection antibody. Range: 0.156-10 ng/mL

The mean S1PR1/EDG1 concentration was determined to be 3.08 ng/mL in SH-SY5Y cell extract based on a 3.2 mg/mL extract load and 2.11 ng/mL in MDA-MB-231 cell extract based on a 1.2 mg/mL extract load.