

For Research Use Only

# Complement C2 Recombinant Matched Antibody Pair, PBS Only



Catalog Number:MP01780-3

## Capture Antibody Information

**Catalog Number:**  
85088-2-PBS  
**Host:**  
Rabbit  
**Isotype:**  
IgG  
**Purification Method:**  
Protein A purification

**Clone ID:**  
242739F4  
**Reactivity:**  
human

**Conjugate:**  
Unconjugated  
**Full name:**  
complement component 2  
**Gene ID:**  
717

## Detection Antibody Information

**Catalog Number:**  
85088-3-PBS  
**Host:**  
Rabbit  
**Isotype:**  
IgG  
**Purification Method:**  
Protein A purification

**Clone ID:**  
242739H7  
**Reactivity:**  
human  
**GenBank:**  
NM\_000063.6

**Conjugate:**  
Unconjugated  
**Full name:**  
complement component 2  
**Gene ID:**  
717

## Applications

**Tested Applications:**  
Sandwich ELISA

**Range:**  
0.391-25 ng/mL (Sandwich ELISA)

**Recommended Dilutions:**  
It is recommended that this reagent should be titrated in each testing system to obtain optimal results.

## Product Information

MP01780-3 targets Complement C2 in immunoassays as a matched antibody pair. Validated in Sandwich ELISA.

Capture antibody: C2 Recombinant antibody, PBS Only (Capture/Detector) 85088-2-PBS (242739F4). 100 µg. Concentration 1 mg/mL.

Detection antibody: C2 Recombinant antibody, PBS Only (Capture/Detector) 85088-3-PBS (242739H7). 100 µg. Concentration 1 mg/mL.

Unconjugated rabbit recombinant monoclonal antibody pair in PBS only storage buffer at a concentration of 1 mg/mL, ready for conjugation. Created using Proteintech's proprietary in-house recombinant technology. Recombinant production enables unrivalled batch-to-batch consistency, easy scale-up, and future security of supply.

Matched antibody pairs are designed for use in a variety of assays and platforms that require matched antibody pairs.

Antibody use should be optimized for each application and assay.

## Storage

**Storage:**  
Store at -80°C.  
**Storage buffer:**  
PBS only

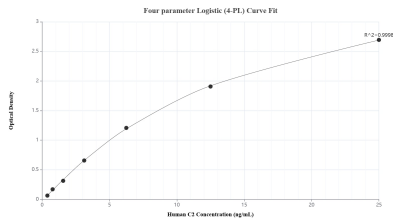
For technical support and original validation data for this product please contact:

T: 1 (888) 4PTGLAB (1-888-478-4522) (toll free in USA), or 1(312) 455-8498 (outside USA)

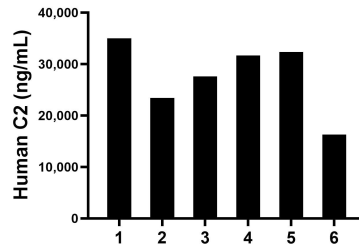
E: [proteintech@ptglab.com](mailto:proteintech@ptglab.com)  
W: [ptglab.com](http://ptglab.com)

**This product is exclusively available under Proteintech Group brand and is not available to purchase from any other manufacturer.**

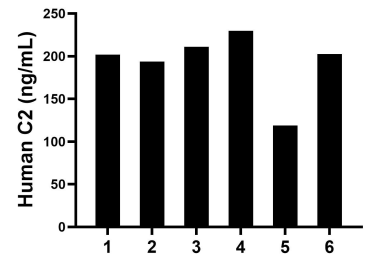
## Selected Validation Data



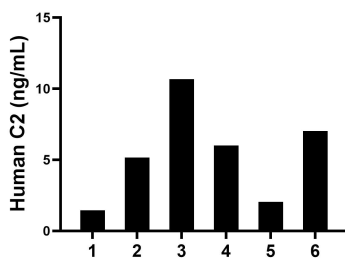
Sandwich ELISA standard curve of MP01780-3, Human C2 Recombinant Matched Antibody Pair - PBS only. 85088-2-PBS was coated to a plate as the capture antibody and incubated with serial dilutions of standard Eg3058. 85088-3-PBS was HRP conjugated as the detection antibody. Range: 0.391-25 ng/mL



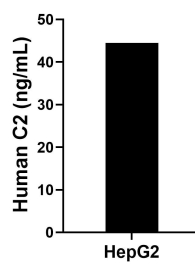
Serum of six individual healthy human donors was measured. The C2 concentration of detected samples was determined to be 27,730.87 ng/mL with a range of 16,308.58-35,021.63 ng/mL



Human milk of six individual healthy human donors was measured. The C2 concentration of detected samples was determined to be 192.92 ng/mL with a range of 118.70-229.78 ng/mL



Saliva of six individual healthy human donors was measured. The C2 concentration of detected samples was determined to be 5.39 ng/mL with a range of 1.44-10.68 ng/mL



HepG2 were cultured in DMEM supplemented with 10% fetal bovine serum, 2.5 mM L-glutamine, 100 U/mL penicillin, and 100 µg/mL streptomycin sulfate. An aliquot of the cell culture supernate was removed, assayed for human C2, and measured 44.51 ng/mL