

For Research Use Only

ErbB3/HER3 Recombinant Matched Antibody Pair, PBS Only



Catalog Number:MP01777-1

Capture Antibody Information

Catalog Number:
85053-2-PBS
Host:
Rabbit
Isotype:
IgG
Purification Method:
Protein A purification

Clone ID:
242605C4
Reactivity:
human

Conjugate:
Unconjugated
Full name:
v-erb-b2 erythroblastic leukemia viral oncogene homolog 3 (avian)
Gene ID:
2065

Detection Antibody Information

Catalog Number:
85053-1-PBS
Host:
Rabbit
Isotype:
IgG
Purification Method:
Protein A purification

Clone ID:
242605B8
Reactivity:
human
GenBank:
BC082992

Conjugate:
Unconjugated
Full name:
v-erb-b2 erythroblastic leukemia viral oncogene homolog 3 (avian)
Gene ID:
2065

Applications

Tested Applications:
Cytometric bead array, Sandwich ELISA

Range:
0.625-80 ng/mL (Cytometric Bead Array)
31.3-2000 pg/mL (Sandwich ELISA)

Recommended Dilutions:
It is recommended that this reagent should be titrated in each testing system to obtain optimal results.

Product Information

MP01777-1 targets ErbB3/HER3 in immunoassays as a matched antibody pair. Validated in Cytometric bead array, Sandwich ELISA.

Capture antibody: ERBB3 Recombinant antibody, PBS Only (Capture) 85053-2-PBS (242605C4). 100 µg. Concentration 1 mg/mL.

Detection antibody: ERBB3 Recombinant antibody, PBS Only (Detector) 85053-1-PBS (242605B8). 100 µg. Concentration 1 mg/mL.

Unconjugated rabbit recombinant monoclonal antibody pair in PBS only storage buffer at a concentration of 1 mg/mL, ready for conjugation. Created using Proteintech's proprietary in-house recombinant technology. Recombinant production enables unrivalled batch-to-batch consistency, easy scale-up, and future security of supply.

Matched antibody pairs are designed for use in a variety of assays and platforms that require matched antibody pairs.

Antibody use should be optimized for each application and assay.

Storage

Storage:
Store at -80°C.
Storage buffer:
PBS only

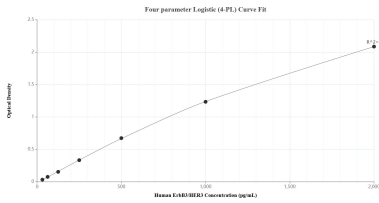
For technical support and original validation data for this product please contact:

T: 1 (888) 4PTGLAB (1-888-478-4522) (toll free in USA), or 1(312) 455-8498 (outside USA)

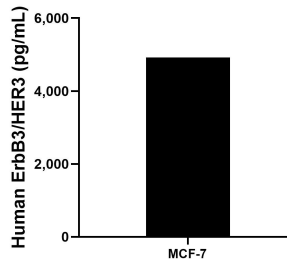
E: proteintech@ptglab.com
W: ptglab.com

This product is exclusively available under Proteintech Group brand and is not available to purchase from any other manufacturer.

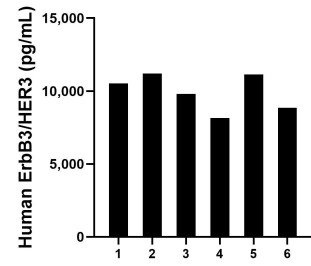
Selected Validation Data



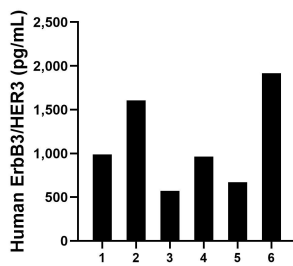
Sandwich ELISA standard curve of MP01777-1, Human ErbB3/HER3 Recombinant Matched Antibody Pair - PBS only. 85053-2-PBS was coated to a plate as the capture antibody and incubated with serial dilutions of standard Eg2245. 85053-1-PBS was HRP conjugated as the detection antibody. Range: 31.3-2000 pg/mL



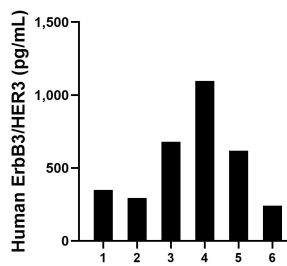
MCF-7 cells were cultured in DMEM supplemented with 10% fetal bovine serum, 2.5 mM L-glutamine, 100 U/mL penicillin, and 100 µg/mL streptomycin sulfate. An aliquot of the cell culture supernatant was removed, assayed for human ErbB3/HER3, and measured 4,918.4 pg/mL



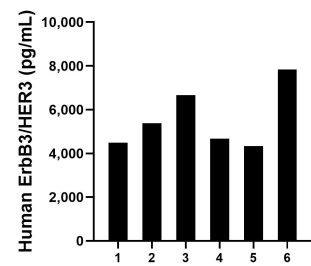
Serum of six individual healthy human donors was measured. The ErbB3/HER3 concentration of detected samples was determined to be 9,941.5 pg/mL with a range of 8,149.4-11,207.9 pg/mL



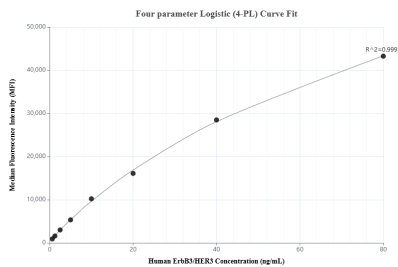
Saliva of six individual healthy human donors was measured. The ErbB3/HER3 concentration of detected samples was determined to be 1,118.6 pg/mL with a range of 572.4-1,916.5 pg/mL



Urine of six individual healthy human donors was measured. The ErbB3/HER3 concentration of detected samples was determined to be 546.4 pg/mL with a range of 240.4-1,095.7 pg/mL



Human milk of six individual healthy human donors was measured. The ErbB3/HER3 concentration of detected samples was determined to be 5,561.2 pg/mL with a range of 4,339.8-7,839.0 pg/mL



Cytometric bead array standard curve of MP01777-1, ErbB3/HER3 Recombinant Matched Antibody Pair, PBS Only. Capture antibody: 85053-2-PBS. Detection antibody: 85053-1-PBS. Standard: Eg2245. Range: 0.625-80 ng/mL