

For Research Use Only

YBX1 Recombinant Matched Antibody Pair, PBS Only



Catalog Number:MP01766-1

Capture Antibody Information

Catalog Number:
84993-2-PBS

Host:
Rabbit

Isotype:
IgG

Purification Method:
Protein A purification

Clone ID:
242462D2

Reactivity:
human

Immunogen Catalog Number:
Ag14129

Conjugate:
Unconjugated
Full name:
Y box binding protein 1

Gene ID:
4904

Detection Antibody Information

Catalog Number:
84993-3-PBS

Host:
Rabbit

Isotype:
IgG

Purification Method:
Protein A purification

Clone ID:
242462G1

Reactivity:
human

GenBank:
BC010430

Immunogen Catalog Number:
Ag14129

Conjugate:
Unconjugated
Full name:
Y box binding protein 1

Gene ID:
4904

Applications

Tested Applications:
Cytometric bead array, Sandwich ELISA

Range:
1.563-200 ng/mL (Cytometric Bead Array)
39.1-2500 pg/mL (Sandwich ELISA)

Recommended Dilutions:
It is recommended that this reagent should be titrated in each testing system to obtain optimal results.

Product Information

MP01766-1 targets YBX1 in immunoassays as a matched antibody pair. Validated in Cytometric bead array, Sandwich ELISA.

Capture antibody: YBX1 Recombinant antibody, PBS Only (Capture) 84993-2-PBS (242462D2). 100 µg. Concentration 1 mg/mL.

Detection antibody: YBX1 Recombinant antibody, PBS Only (Detector) 84993-3-PBS (242462G1). 100 µg. Concentration 1 mg/mL.

Unconjugated rabbit recombinant monoclonal antibody pair in PBS only storage buffer at a concentration of 1 mg/mL, ready for conjugation. Created using Proteintech's proprietary in-house recombinant technology. Recombinant production enables unrivalled batch-to-batch consistency, easy scale-up, and future security of supply.

Matched antibody pairs are designed for use in a variety of assays and platforms that require matched antibody pairs.

Antibody use should be optimized for each application and assay.

Storage

Storage:
Store at -80°C.
Storage buffer:
PBS only

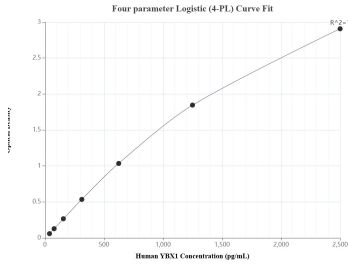
For technical support and original validation data for this product please contact:

T: 1 (888) 4PTGLAB (1-888-478-4522) (toll free in USA), or 1(312) 455-8498 (outside USA)

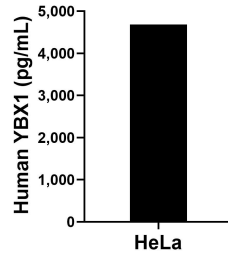
E: proteintech@ptglab.com
W: ptglab.com

This product is exclusively available under Proteintech Group brand and is not available to purchase from any other manufacturer.

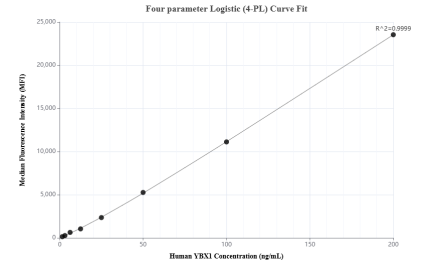
Selected Validation Data



Sandwich ELISA standard curve of MP01766-1, Human YBX1 Recombinant Matched Antibody Pair - PBS only. 84993-2-PBS was coated to a plate as the capture antibody and incubated with serial dilutions of standard Ag14129. 84993-3-PBS was HRP conjugated as the detection antibody. Range: 39.1-2500 pg/mL



The mean YBX1 concentration was determined to be 4,684.7 pg/mL in HeLa cell extract based on a 1.3 mg/mL extract load.



Cytometric bead array standard curve of MP01766-1, YBX1 Recombinant Matched Antibody Pair, PBS Only. Capture antibody: 84993-2-PBS. Detection antibody: 84993-3-PBS. Standard: Ag14129. Range: 1.563-200 ng/mL