

For Research Use Only

SLC27A6 Recombinant Matched Antibody Pair, PBS Only



Catalog Number:MP01755-2

Capture Antibody Information

Catalog Number:
84995-1-PBS
Host:
Rabbit
Isotype:
IgG
Purification Method:
Protein A purification

Clone ID:
242542F8
Reactivity:
human
Immunogen Catalog Number:
Ag32179

Conjugate:
Unconjugated
Full name:
solute carrier family 27 (fatty acid transporter), member 6
Gene ID:
28965

Detection Antibody Information

Catalog Number:
84995-2-PBS
Host:
Rabbit
Isotype:
IgG
Purification Method:
Protein A purification

Clone ID:
242542G4
Reactivity:
human
GenBank:
BC041945
Immunogen Catalog Number:
Ag32179

Conjugate:
Unconjugated
Full name:
solute carrier family 27 (fatty acid transporter), member 6
Gene ID:
28965

Applications

Tested Applications:
Cytometric bead array, Sandwich ELISA

Range:
0.781-100 ng/mL (Cytometric Bead Array)
0.781-50 ng/mL (Sandwich ELISA)

Recommended Dilutions:
It is recommended that this reagent should be titrated in each testing system to obtain optimal results.

Product Information

MP01755-2 targets SLC27A6 in immunoassays as a matched antibody pair. Validated in Cytometric bead array, Sandwich ELISA.

Capture antibody: SLC27A6 Recombinant antibody, PBS Only (Capture) 84995-1-PBS (242542F8). 100 µg. Concentration 1 mg/mL.

Detection antibody: SLC27A6 Recombinant antibody, PBS Only (Detector) 84995-2-PBS (242542G4). 100 µg. Concentration 1 mg/mL.

Unconjugated rabbit recombinant monoclonal antibody pair in PBS only storage buffer at a concentration of 1 mg/mL, ready for conjugation. Created using Proteintech's proprietary in-house recombinant technology. Recombinant production enables unrivalled batch-to-batch consistency, easy scale-up, and future security of supply.

Matched antibody pairs are designed for use in a variety of assays and platforms that require matched antibody pairs.

Antibody use should be optimized for each application and assay.

Storage

Storage:
Store at -80°C.
Storage buffer:
PBS only

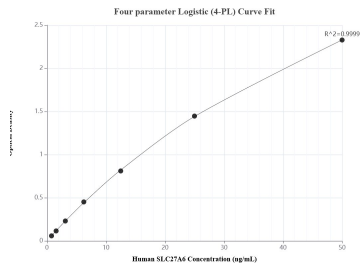
For technical support and original validation data for this product please contact:

T: 1 (888) 4PTGLAB (1-888-478-4522) (toll free in USA), or 1(312) 455-8498 (outside USA)

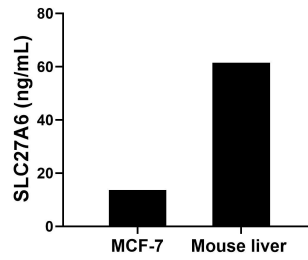
E: proteintech@ptglab.com
W: ptglab.com

This product is exclusively available under Proteintech Group brand and is not available to purchase from any other manufacturer.

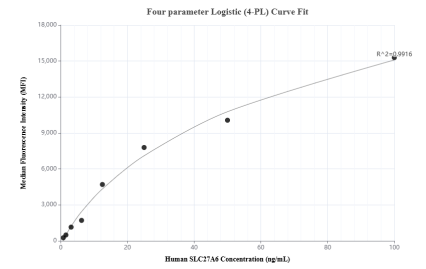
Selected Validation Data



Sandwich ELISA standard curve of MP01755-2, Human SLC27A6 Recombinant Matched Antibody Pair - PBS only. 84995-1-PBS was coated to a plate as the capture antibody and incubated with serial dilutions of standard Ag32179. 84995-2-PBS was HRP conjugated as the detection antibody. Range: 0.781-50 ng/mL



The mean SLC27A6 concentration was determined to be 13.71 ng/mL in MCF-7 cell extract based on a 1.20 mg/mL extract load and 61.53 ng/mL in mouse liver extract based on a 3.70 mg/mL extract load.



Cytometric bead array standard curve of MP01755-2, SLC27A6 Recombinant Matched Antibody Pair, PBS Only. Capture antibody: 84995-1-PBS. Detection antibody: 84995-2-PBS. Standard: Ag32179. Range: 0.781-100 ng/mL