

For Research Use Only

# EGFR Recombinant Matched Antibody Pair, PBS Only



Catalog Number:MP01744-3

## Capture Antibody Information

Catalog Number:

85039-1-PBS

Host:

Rabbit

Isotype:

IgG

Purification Method:

Protein A purification

Clone ID:

242684E4

Reactivity:

human

Conjugate:

Unconjugated

Full name:

epidermal growth factor receptor (erythroblastic leukemia viral (v-erb-b) oncogene homolog, avian)

Gene ID:

1956

## Detection Antibody Information

Catalog Number:

85039-3-PBS

Host:

Rabbit

Isotype:

IgG

Purification Method:

Protein A purification

Clone ID:

242684F3

Reactivity:

human

GenBank:

NM\_005228.5

Conjugate:

Unconjugated

Full name:

epidermal growth factor receptor (erythroblastic leukemia viral (v-erb-b) oncogene homolog, avian)

Gene ID:

1956

## Applications

Tested Applications:

Sandwich ELISA

Range:

0.313-20 ng/mL (Sandwich ELISA)

Recommended Dilutions:

It is recommended that this reagent should be titrated in each testing system to obtain optimal results.

## Product Information

MP01744-3 targets EGFR in immunoassays as a matched antibody pair. Validated in Sandwich ELISA.

Capture antibody: EGFR Recombinant antibody, PBS Only (Capture/Detector) 85039-1-PBS (242684E4). 100 µg. Concentration 1 mg/mL.

Detection antibody: EGFR Recombinant antibody, PBS Only (Capture/Detector) 85039-3-PBS (242684F3). 100 µg. Concentration 1 mg/mL.

Unconjugated rabbit recombinant monoclonal antibody pair in PBS only storage buffer at a concentration of 1 mg/mL, ready for conjugation. Created using Proteintech's proprietary in-house recombinant technology. Recombinant production enables unrivalled batch-to-batch consistency, easy scale-up, and future security of supply.

Matched antibody pairs are designed for use in a variety of assays and platforms that require matched antibody pairs.

Antibody use should be optimized for each application and assay.

## Storage

Storage:

Store at -80°C.

Storage buffer:

PBS only

For technical support and original validation data for this product please contact:

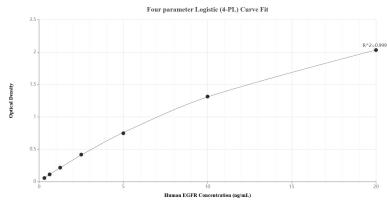
T: 1 (888) 4PTGLAB (1-888-478-4522) (toll free in USA), or 1(312) 455-8498 (outside USA)

E: [proteintech@ptglab.com](mailto:proteintech@ptglab.com)

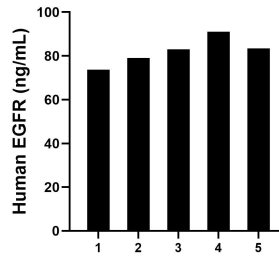
W: [ptglab.com](http://ptglab.com)

This product is exclusively available under Proteintech Group brand and is not available to purchase from any other manufacturer.

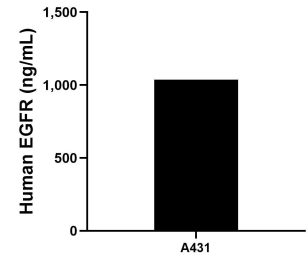
## Selected Validation Data



Sandwich ELISA standard curve of MP01744-3, Human EGFR Recombinant Matched Antibody Pair - PBS only. 85039-1-PBS was coated to a plate as the capture antibody and incubated with serial dilutions of standard Eg0204. 85039-3-PBS was HRP conjugated as the detection antibody. Range: 0.313-20 ng/mL



Serum of five individual healthy human donors was measured. The EGFR concentration of detected samples was determined to be 82.02 ng/mL with a range of 73.67-90.99 ng/mL



A431 cells were cultured in DMEM supplemented with 10% fetal bovine serum, 2.5 mM L-glutamine, 100 U/mL penicillin, and 100 µg/mL streptomycin sulfate. An aliquot of the cell culture supernate was removed, assayed for human EGFR, and measured 1,036.46 ng/mL