

For Research Use Only



# ATP1A2 Recombinant Matched Antibody Pair, PBS Only

Catalog Number:MP01738-1

## Capture Antibody Information

**Catalog Number:**  
84999-3-PBS  
**Host:**  
Rabbit  
**Isotype:**  
IgG  
**Purification Method:**  
Protein A purification

**Clone ID:**  
242414G10  
**Reactivity:**  
human  
**Immunogen Catalog Number:**  
Ag10489

**Conjugate:**  
Unconjugated  
**Full name:**  
ATPase, Na<sup>+</sup>/K<sup>+</sup> transporting, alpha 2 (+) polypeptide  
**Gene ID:**  
477

## Detection Antibody Information

**Catalog Number:**  
84999-2-PBS  
**Host:**  
Rabbit  
**Isotype:**  
IgG  
**Purification Method:**  
Protein A purification

**Clone ID:**  
242414F5  
**Reactivity:**  
human  
**GenBank:**  
BC052271  
**Immunogen Catalog Number:**  
Ag10489

**Conjugate:**  
Unconjugated  
**Full name:**  
ATPase, Na<sup>+</sup>/K<sup>+</sup> transporting, alpha 2 (+) polypeptide  
**Gene ID:**  
477

## Applications

**Tested Applications:**  
Cytometric bead array, Sandwich ELISA

**Range:**  
0.938-60 ng/mL (Cytometric Bead Array)  
0.391-25 ng/mL (Sandwich ELISA)

**Recommended Dilutions:**  
It is recommended that this reagent should be titrated in each testing system to obtain optimal results.

## Product Information

MP01738-1 targets ATP1A2 in immunoassays as a matched antibody pair. Validated in Cytometric bead array, Sandwich ELISA.

Capture antibody: ATP1A2 Recombinant antibody, PBS Only (Capture) 84999-3-PBS (242414G10). 100 µg. Concentration 1 mg/mL.

Detection antibody: ATP1A2 Recombinant antibody, PBS Only (Detector) 84999-2-PBS (242414F5). 100 µg. Concentration 1 mg/mL.

Unconjugated rabbit recombinant monoclonal antibody pair in PBS only storage buffer at a concentration of 1 mg/mL, ready for conjugation. Created using Proteintech's proprietary in-house recombinant technology. Recombinant production enables unrivalled batch-to-batch consistency, easy scale-up, and future security of supply.

Matched antibody pairs are designed for use in a variety of assays and platforms that require matched antibody pairs.

Antibody use should be optimized for each application and assay.

## Storage

**Storage:**  
Store at -80°C.  
**Storage buffer:**  
PBS only

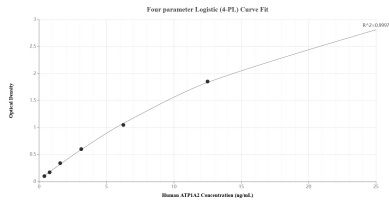
For technical support and original validation data for this product please contact:

T: 1 (888) 4PTGLAB (1-888-478-4522) (toll free in USA), or 1(312) 455-8498 (outside USA)

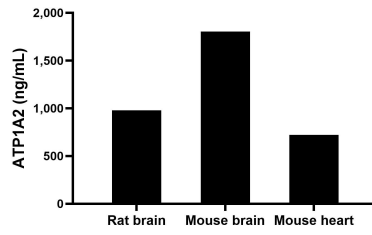
E: [proteintech@ptglab.com](mailto:proteintech@ptglab.com)  
W: [ptglab.com](http://ptglab.com)

**This product is exclusively available under Proteintech Group brand and is not available to purchase from any other manufacturer.**

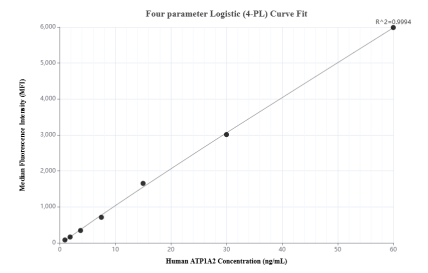
## Selected Validation Data



Sandwich ELISA standard curve of MP01738-1, Human ATP1A2 Recombinant Matched Antibody Pair - PBS only. 84999-3-PBS was coated to a plate as the capture antibody and incubated with serial dilutions of standard Ag10489. 84999-2-PBS was HRP conjugated as the detection antibody. Range: 0.391-25 ng/mL



The mean ATP1A2 concentration was determined to be 976.80 ng/mL in rat brain extract based on a 1.60 mg/mL extract load, 1,802.51 ng/mL in mouse brain cell extract based on a 2.20 mg/mL extract load and 719.92 ng/mL in mouse heart cell extract based on a 1.40 mg/mL extract load.



Cytometric bead array standard curve of MP01738-1, ATP1A2 Recombinant Matched Antibody Pair, PBS Only. Capture antibody: 84999-3-PBS. Detection antibody: 84999-2-PBS. Standard: Ag10489. Range: 0.938-60 ng/mL