

PPP1CB Recombinant Matched Antibody Pair, PBS Only

Catalog Number: **MP01723-2**

Capture Antibody Information

Catalog Number:

84938-3-PBS

Host:

Rabbit

Isotype:

IgG

Purification Method:

Protein A purification

Clone ID:

242547D5

Reactivity:

human

Immunogen Catalog Number:

Ag0183

Conjugate:

Unconjugated

Full name:

protein phosphatase 1, catalytic subunit, beta isoform

Gene ID:

5500

Detection Antibody Information

Catalog Number:

84938-2-PBS

Host:

Rabbit

Isotype:

IgG

Purification Method:

Protein A purification

Clone ID:

242547C6

Reactivity:

human

GenBank:

BC002697

Immunogen Catalog Number:

Ag0183

Conjugate:

Unconjugated

Full name:

protein phosphatase 1, catalytic subunit, beta isoform

Gene ID:

5500

Applications

Tested Applications:

Cytometric bead array, Sandwich ELISA

Range:

1.56-100 ng/mL (Cytometric Bead Array)
7.81-500 ng/mL (Sandwich ELISA)

Recommended Dilutions:

It is recommended that this reagent should be titrated in each testing system to obtain optimal results.

Product Information

MP01723-2 targets PPP1CB in immunoassays as a matched antibody pair. Validated in Cytometric bead array, Sandwich ELISA.

Capture antibody: PPP1CB Recombinant antibody, PBS Only (Capture) 84938-3-PBS (242547D5). 100 µg. Concentration 1 mg/mL.

Detection antibody: PPP1CB Recombinant antibody, PBS Only (Detector) 84938-2-PBS (242547C6). 100 µg. Concentration 1 mg/mL.

Unconjugated rabbit recombinant monoclonal antibody pair in PBS only storage buffer at a concentration of 1 mg/mL, ready for conjugation. Created using Proteintech's proprietary in-house recombinant technology. Recombinant production enables unrivalled batch-to-batch consistency, easy scale-up, and future security of supply.

Matched antibody pairs are designed for use in a variety of assays and platforms that require matched antibody pairs.

Antibody use should be optimized for each application and assay.

Storage

Storage:

Store at -80°C.

Storage buffer:

PBS only

For technical support and original validation data for this product please contact:

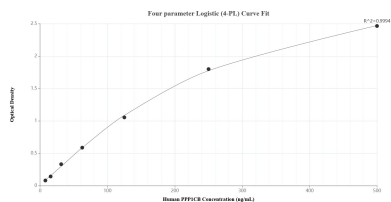
T: 1 (888) 4PTGLAB (1-888-478-4522) (toll free in USA), or 1(312) 455-8498 (outside USA)

E: proteintech@ptglab.com

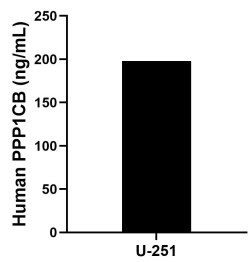
W: ptglab.com

This product is exclusively available under Proteintech Group brand and is not available to purchase from any other manufacturer.

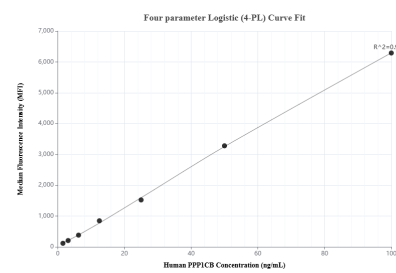
Selected Validation Data



Sandwich ELISA standard curve of MP01723-2, Human PPP1CB Recombinant Matched Antibody Pair - PBS only. 84938-3-PBS was coated to a plate as the capture antibody and incubated with serial dilutions of standard Ag0183. 84938-2-PBS was HRP conjugated as the detection antibody. Range: 7.81-500 ng/mL.



The mean PPP1CB concentration was determined to be 197.98 ng/mL in U-251 cell extract based on a 1.60 mg/mL extract load.



Cytometric bead array standard curve of MP01723-2, PPP1CB Recombinant Matched Antibody Pair, PBS Only. Capture antibody: 84938-3-PBS. Detection antibody: 84938-2-PBS. Standard: Ag0183. Range: 1.56-100 ng/mL.