

For Research Use Only

Bacteriophage T7 T7 RNA polymerase Recombinant Matched Antibody Pair, PBS Only



Catalog Number:MP01722-2

Capture Antibody Information

Catalog Number:
84959-1-PBS

Host:
Rabbit

Isotype:
IgG

Purification Method:
Protein A purification

Clone ID:
242544A5

Reactivity:
bacteriophage t7

Immunogen Catalog Number:
Ag32001

Conjugate:
Unconjugated

Full name:
T7 RNA polymerase

Gene ID:
1261050

Detection Antibody Information

Catalog Number:
84959-3-PBS

Host:
Rabbit

Isotype:
IgG

Purification Method:
Protein A purification

Clone ID:
242544G7

Reactivity:
bacteriophage t7

GenBank:
NP_041960

Immunogen Catalog Number:
Ag32001

Conjugate:
Unconjugated

Full name:
T7 RNA polymerase

Gene ID:
1261050

Applications

Tested Applications:
Cytometric bead array, Sandwich
ELISA

Range:
0.781-100 ng/mL (Cytometric Bead
Array)
0.195-12.5 ng/mL (Sandwich ELISA)

Recommended Dilutions:
It is recommended that this reagent
should be titrated in each testing
system to obtain optimal results.

Product Information

MP01722-2 targets T7 RNA polymerase in immunoassays as a matched antibody pair. Validated in Cytometric bead array, Sandwich ELISA.

Capture antibody: Bacteriophage t7 T7 RNA polymerase Recombinant antibody, PBS Only (Capture) 84959-1-PBS (242544A5). 100 µg. Concentration 1 mg/ml.

Detection antibody: Bacteriophage t7 T7 RNA polymerase Recombinant antibody, PBS Only (Detector) 84959-3-PBS (242544G7). 100 µg. Concentration 1 mg/ml.

Unconjugated rabbit recombinant monoclonal antibody pair in PBS only storage buffer at a concentration of 1 mg/mL, ready for conjugation. Created using Proteintech's proprietary in-house recombinant technology. Recombinant production enables unrivalled batch-to-batch consistency, easy scale-up, and future security of supply.

Matched antibody pairs are designed for use in a variety of assays and platforms that require matched antibody pairs.

Antibody use should be optimized for each application and assay.

Storage

Storage:
Store at -80°C.
Storage buffer:
PBS only

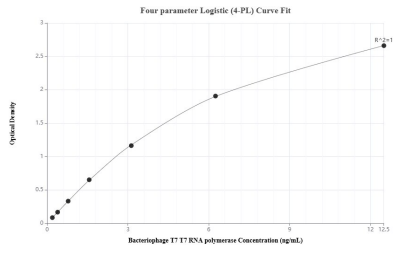
For technical support and original validation data for this product please contact:

T: 1 (888) 4PTGLAB (1-888-478-4522) (toll free
in USA), or 1(312) 455-8498 (outside USA)

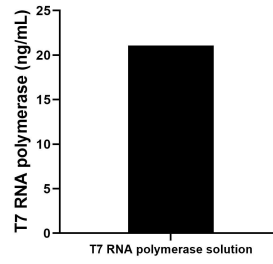
E: proteintech@ptglab.com
W: ptglab.com

This product is exclusively available under Proteintech Group brand and is not available to purchase from any other manufacturer.

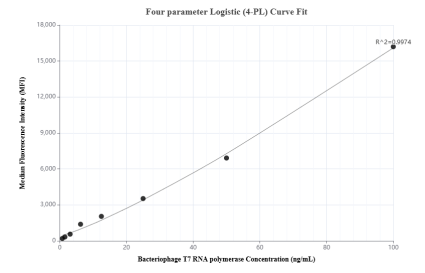
Selected Validation Data



Sandwich ELISA standard curve of MP01722-2, Bacteriophage T7 T7 RNA polymerase Recombinant Matched Antibody Pair - PBS only. 84959-1-PBS was coated to a plate as the capture antibody and incubated with serial dilutions of standard Ag32001. 84959-3-PBS was HRP conjugated as the detection antibody. Range: 0.195-12.5 ng/mL



The mean T7 RNA polymerase concentration was determined to be 21.07 ng/mL in T7 RNA polymerase solution (CW/3393) bought from CW BIO.



Cytometric bead array standard curve of MP01722-2, BACTERIOPHAGE T7 T7 RNA polymerase Recombinant Matched Antibody Pair, PBS Only. Capture antibody: 84959-1-PBS. Detection antibody: 84959-3-PBS. Standard: Ag32001. Range: 0.781-100 ng/mL