

For Research Use Only

# ALR Recombinant Matched Antibody Pair, PBS Only



Catalog Number:MP01721-2

## Capture Antibody Information

**Catalog Number:**  
84972-1-PBS  
**Host:**  
Rabbit  
**Isotype:**  
IgG  
**Purification Method:**  
Protein A purification

**Clone ID:**  
242557E2  
**Reactivity:**  
human  
**Immunogen Catalog Number:**  
Ag1840

**Conjugate:**  
Unconjugated  
**Full name:**  
growth factor, augments liver regeneration  
**Gene ID:**  
2671

## Detection Antibody Information

**Catalog Number:**  
84972-2-PBS  
**Host:**  
Rabbit  
**Isotype:**  
IgG  
**Purification Method:**  
Protein A purification

**Clone ID:**  
242557F7  
**Reactivity:**  
human  
**GenBank:**  
BC028348  
**Immunogen Catalog Number:**  
Ag1840

**Conjugate:**  
Unconjugated  
**Full name:**  
growth factor, augments liver regeneration  
**Gene ID:**  
2671

## Applications

**Tested Applications:**  
Cytometric bead array

**Range:**  
0.156-20 ng/mL (Cytometric Bead Array)

**Recommended Dilutions:**  
It is recommended that this reagent should be titrated in each testing system to obtain optimal results.

## Product Information

MP01721-2 targets ALR in immunoassays as a matched antibody pair. Validated in Cytometric bead array.

Capture antibody: GFER Recombinant antibody, PBS Only (Capture) 84972-1-PBS (242557E2). 100 µg. Concentration 1 mg/ml.

Detection antibody: GFER Recombinant antibody, PBS Only (Detector) 84972-2-PBS (242557F7). 100 µg. Concentration 1 mg/ml.

Unconjugated rabbit recombinant monoclonal antibody pair in PBS only storage buffer at a concentration of 1 mg/mL, ready for conjugation. Created using Proteintech's proprietary in-house recombinant technology. Recombinant production enables unrivalled batch-to-batch consistency, easy scale-up, and future security of supply.

Matched antibody pairs are designed for use in a variety of assays and platforms that require matched antibody pairs.

Antibody use should be optimized for each application and assay.

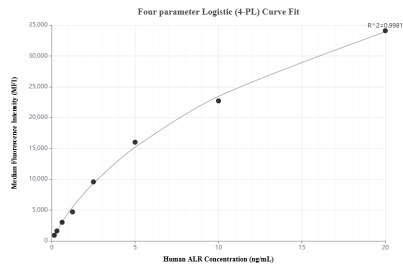
## Storage

**Storage:**  
Store at -80°C.  
**Storage buffer:**  
PBS only

For technical support and original validation data for this product please contact:  
T: 1 (888) 4PTGLAB (1-888-478-4522) (toll free in USA), or 1(312) 455-8498 (outside USA) E: proteintech@ptglab.com W: ptglab.com

This product is exclusively available under Proteintech Group brand and is not available to purchase from any other manufacturer.

## Selected Validation Data



Cytometric bead array standard curve of MP01721-2, ALR Recombinant Matched Antibody Pair, PBS Only. Capture antibody: 84972-1-PBS. Detection antibody: 84972-2-PBS. Standard: Ag1840. Range: 0.156-20 ng/mL