

For Research Use Only

RAD50 Recombinant Matched Antibody Pair, PBS Only



Catalog Number:MP01720-3

Capture Antibody Information

Catalog Number:
84969-1-PBS

Host:
Rabbit

Isotype:
IgG

Purification Method:
Protein A purification

Clone ID:
242541B5

Reactivity:
human

Immunogen Catalog Number:
Ag29949

Conjugate:
Unconjugated

Full name:
RAD50 homolog (S. cerevisiae)

Gene ID:
10111

Detection Antibody Information

Catalog Number:
84969-2-PBS

Host:
Rabbit

Isotype:
IgG

Purification Method:
Protein A purification

Clone ID:
242541D1

Reactivity:
human

GenBank:
NM_005732

Immunogen Catalog Number:
Ag29949

Conjugate:
Unconjugated

Full name:
RAD50 homolog (S. cerevisiae)

Gene ID:
10111

Applications

Tested Applications:
Sandwich ELISA

Range:
78.1-5000 pg/mL (Sandwich ELISA)

Recommended Dilutions:
It is recommended that this reagent should be titrated in each testing system to obtain optimal results.

Product Information

MP01720-3 targets RAD50 in immunoassays as a matched antibody pair. Validated in Sandwich ELISA.

Capture antibody: RAD50 Recombinant antibody, PBS Only (Capture) 84969-1-PBS (242541B5). 100 µg. Concentration 1 mg/mL.

Detection antibody: RAD50 Recombinant antibody, PBS Only (Capture/Detector) 84969-2-PBS (242541D1). 100 µg. Concentration 1 mg/mL.

Unconjugated rabbit recombinant monoclonal antibody pair in PBS only storage buffer at a concentration of 1 mg/mL, ready for conjugation. Created using Proteintech's proprietary in-house recombinant technology. Recombinant production enables unrivalled batch-to-batch consistency, easy scale-up, and future security of supply.

Matched antibody pairs are designed for use in a variety of assays and platforms that require matched antibody pairs.

Antibody use should be optimized for each application and assay.

Storage

Storage:
Store at -80°C.
Storage buffer:
PBS only

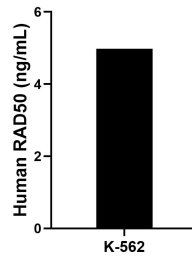
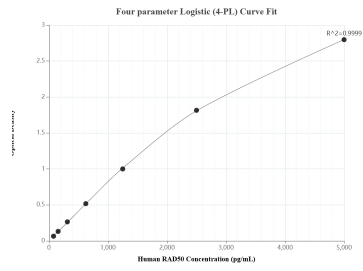
For technical support and original validation data for this product please contact:

T: 1 (888) 4PTGLAB (1-888-478-4522) (toll free in USA), or 1(312) 455-8498 (outside USA)

E: proteintech@ptglab.com
W: ptglab.com

This product is exclusively available under Proteintech Group brand and is not available to purchase from any other manufacturer.

Selected Validation Data



Sandwich ELISA standard curve of MP01720-3, Human RAD50 Recombinant Matched Antibody Pair - PBS only. 84969-1-PBS was coated to a plate as the capture antibody and incubated with serial dilutions of standard Ag29949. 84969-2-PBS was HRP conjugated as the detection antibody. Range: 78.1-5000 pg/mL

The mean RAD50 concentration was determined to be 5.0 ng/mL in K-562 cell extract based on a 2.4 mg/mL extract load.