

For Research Use Only

# RCN2 Recombinant Matched Antibody Pair, PBS Only



Catalog Number:MP01713-1

## Capture Antibody Information

Catalog Number:  
84956-3-PBS

Host:  
Rabbit

Isotype:  
IgG

Purification Method:  
Protein A purification

Clone ID:  
242612H8

Reactivity:  
human

Immunogen Catalog Number:  
Ag0247

Conjugate:  
Unconjugated

Full name:  
reticulocalbin 2, EF-hand calcium binding domain

Gene ID:  
5955

## Detection Antibody Information

Catalog Number:  
84956-2-PBS

Host:  
Rabbit

Isotype:  
IgG

Purification Method:  
Protein A purification

Clone ID:  
242612D10

Reactivity:  
human

GenBank:  
BC004892

Immunogen Catalog Number:  
Ag0247

Conjugate:  
Unconjugated

Full name:  
reticulocalbin 2, EF-hand calcium binding domain

Gene ID:  
5955

## Applications

Tested Applications:  
Cytometric bead array, Sandwich ELISA

Range:  
0.469-60 ng/mL (Cytometric Bead Array)  
78.1-5000 pg/mL (Sandwich ELISA)

Recommended Dilutions:  
It is recommended that this reagent should be titrated in each testing system to obtain optimal results.

## Product Information

MP01713-1 targets RCN2 in immunoassays as a matched antibody pair. Validated in Cytometric bead array, Sandwich ELISA.

Capture antibody: RCN2 Recombinant antibody, PBS Only (Capture) 84956-3-PBS (242612H8). 100 µg. Concentration 1 mg/mL.

Detection antibody: RCN2 Recombinant antibody, PBS Only (Detector) 84956-2-PBS (242612D10). 100 µg. Concentration 1 mg/mL.

Unconjugated rabbit recombinant monoclonal antibody pair in PBS only storage buffer at a concentration of 1 mg/mL, ready for conjugation. Created using Proteintech's proprietary in-house recombinant technology. Recombinant production enables unrivalled batch-to-batch consistency, easy scale-up, and future security of supply.

Matched antibody pairs are designed for use in a variety of assays and platforms that require matched antibody pairs.

Antibody use should be optimized for each application and assay.

## Storage

Storage:  
Store at -80°C.  
Storage buffer:  
PBS only

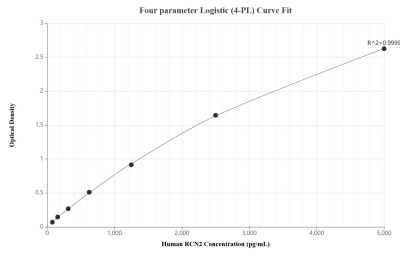
For technical support and original validation data for this product please contact:

T: 1 (888) 4PTGLAB (1-888-478-4522) (toll free in USA), or 1(312) 455-8498 (outside USA)

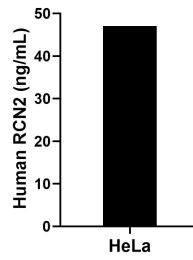
E: [proteintech@ptglab.com](mailto:proteintech@ptglab.com)  
W: [ptglab.com](http://ptglab.com)

This product is exclusively available under Proteintech Group brand and is not available to purchase from any other manufacturer.

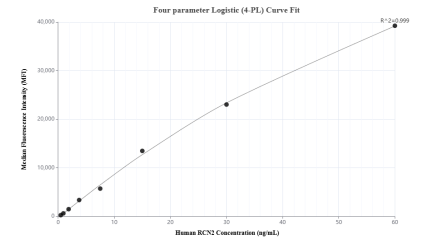
## Selected Validation Data



Sandwich ELISA standard curve of MP01713-1, Human RCN2 Recombinant Matched Antibody Pair - PBS only. 84956-3-PBS was coated to a plate as the capture antibody and incubated with serial dilutions of standard Ag0247. 84956-2-PBS was HRP conjugated as the detection antibody. Range: 78.1-5000 pg/mL



The mean RCN2 concentration was determined to be 47.0 pg/mL in HeLa cell extract based on a 1.8 mg/mL extract load.



Cytometric bead array standard curve of MP01713-1, RCN2 Recombinant Matched Antibody Pair, PBS Only. Capture antibody: 84956-3-PBS. Detection antibody: 84956-2-PBS. Standard: Ag0247. Range: 0.469-60 ng/mL