

For Research Use Only

Cystatin A Recombinant Matched Antibody Pair, PBS Only



Catalog Number:MP01707-1

Capture Antibody Information

Catalog Number:
84953-1-PBS

Host:
Rabbit

Isotype:
IgG

Purification Method:
Protein A purification

Clone ID:
242558E1

Reactivity:
human

Immunogen Catalog Number:
Ag8733

Conjugate:
Unconjugated

Full name:
cystatin A (stefin A)

Gene ID:
1475

Detection Antibody Information

Catalog Number:
84953-2-PBS

Host:
Rabbit

Isotype:
IgG

Purification Method:
Protein A purification

Clone ID:
242558G3

Reactivity:
human

GenBank:
BC010379

Immunogen Catalog Number:
Ag8733

Conjugate:
Unconjugated

Full name:
cystatin A (stefin A)

Gene ID:
1475

Applications

Tested Applications:
Cytometric bead array, Sandwich ELISA

Range:
0.469-60 ng/mL (Cytometric Bead Array)
39.1-2500 pg/mL (Sandwich ELISA)

Recommended Dilutions:
It is recommended that this reagent should be titrated in each testing system to obtain optimal results.

Product Information

MP01707-1 targets Cystatin A in immunoassays as a matched antibody pair. Validated in Cytometric bead array, Sandwich ELISA.

Capture antibody: CSTA Recombinant antibody, PBS Only (Capture/Detector) 84953-1-PBS (242558E1). 100 µg. Concentration 1 mg/ml.

Detection antibody: CSTA Recombinant antibody, PBS Only (Detector) 84953-2-PBS (242558G3). 100 µg. Concentration 1 mg/ml.

Unconjugated rabbit recombinant monoclonal antibody pair in PBS only storage buffer at a concentration of 1 mg/mL, ready for conjugation. Created using Proteintech's proprietary in-house recombinant technology. Recombinant production enables unrivalled batch-to-batch consistency, easy scale-up, and future security of supply.

Matched antibody pairs are designed for use in a variety of assays and platforms that require matched antibody pairs.

Antibody use should be optimized for each application and assay.

Storage

Storage:
Store at -80°C.
Storage buffer:
PBS only

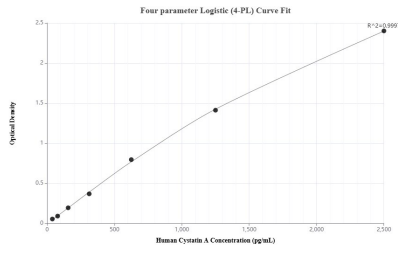
For technical support and original validation data for this product please contact:

T: 1 (888) 4PTGLAB (1-888-478-4522) (toll free in USA), or 1(312) 455-8498 (outside USA)

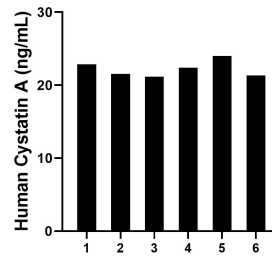
E: proteintech@ptglab.com
W: ptglab.com

This product is exclusively available under Proteintech Group brand and is not available to purchase from any other manufacturer.

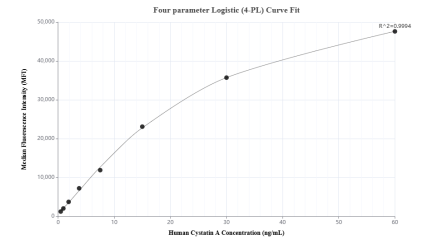
Selected Validation Data



Sandwich ELISA standard curve of MP01707-1, Human Cystatin A Recombinant Matched Antibody Pair - PBS only. 84953-1-PBS was coated to a plate as the capture antibody and incubated with serial dilutions of standard Ag8733. 84953-2-PBS was HRP conjugated as the detection antibody. Range: 39.1-2500 pg/mL



Saliva of six individual healthy human donors was measured. The human Cystatin A concentration of detected samples was determined to be 22.22 ng/mL with a range of 21.18 - 24.01 ng/mL



Cytometric bead array standard curve of MP01707-1, Cystatin A Recombinant Matched Antibody Pair, PBS Only. Capture antibody: 84953-1-PBS. Detection antibody: 84953-2-PBS. Standard: Ag8733. Range: 0.469-60 ng/mL