

For Research Use Only

Eg5 Recombinant Matched Antibody Pair, PBS Only



Catalog Number:MP01688-1

Capture Antibody Information

Catalog Number:

84966-3-PBS

Host:

Rabbit

Isotype:

IgG

Purification Method:

Protein A purification

Clone ID:

242611D11

Reactivity:

human

Immunogen Catalog Number:

Ag20001

Conjugate:

Unconjugated

Full name:

kinesin family member 11

Gene ID:

3832

Detection Antibody Information

Catalog Number:

84966-4-PBS

Host:

Rabbit

Isotype:

IgG

Purification Method:

Protein A purification

Clone ID:

242611H8

Reactivity:

human

GenBank:

BC136474

Immunogen Catalog Number:

Ag20001

Conjugate:

Unconjugated

Full name:

kinesin family member 11

Gene ID:

3832

Applications

Tested Applications:

Cytometric bead array, Sandwich ELISA

Range:

1.563-100 ng/mL (Cytometric Bead Array)
0.781-50 ng/mL (Sandwich ELISA)

Recommended Dilutions:

It is recommended that this reagent should be titrated in each testing system to obtain optimal results.

Product Information

MP01688-1 targets Eg5 in immunoassays as a matched antibody pair. Validated in Cytometric bead array, Sandwich ELISA.

Capture antibody: Eg5 Recombinant antibody, PBS Only (Capture) 84966-3-PBS (242611D11). 100 µg. Concentration 1 mg/mL.

Detection antibody: Eg5 Recombinant antibody, PBS Only (Detector) 84966-4-PBS (242611H8). 100 µg. Concentration 1 mg/mL.

Unconjugated rabbit recombinant monoclonal antibody pair in PBS only storage buffer at a concentration of 1 mg/mL, ready for conjugation. Created using Proteintech's proprietary in-house recombinant technology. Recombinant production enables unrivalled batch-to-batch consistency, easy scale-up, and future security of supply.

Matched antibody pairs are designed for use in a variety of assays and platforms that require matched antibody pairs.

Antibody use should be optimized for each application and assay.

Storage

Storage:

Store at -80°C.

Storage buffer:

PBS only

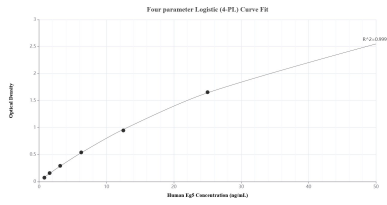
For technical support and original validation data for this product please contact:

T: 1 (888) 4PTGLAB (1-888-478-4522) (toll free in USA), or 1(312) 455-8498 (outside USA)

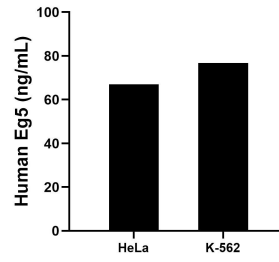
E: proteintech@ptglab.com
W: ptglab.com

This product is exclusively available under Proteintech Group brand and is not available to purchase from any other manufacturer.

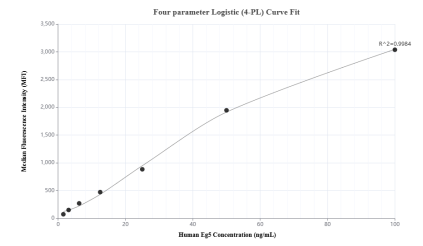
Selected Validation Data



Sandwich ELISA standard curve of MP01688-1, Human Eg5 Recombinant Matched Antibody Pair - PBS only. 84966-3-PBS was coated to a plate as the capture antibody and incubated with serial dilutions of standard Ag20001. 84966-4-PBS was HRP conjugated as the detection antibody. Range: 0.781-50 ng/mL



The mean Eg5 concentration was determined to be 67.04 ng/mL in HeLa cell extract based on a 1.00 mg/mL extract load and 76.72 ng/mL in K-562 cell extract based on a 2.50 mg/mL extract load.



Cytometric bead array standard curve of MP01688-1, Eg5 Recombinant Matched Antibody Pair, PBS Only. Capture antibody: 84966-3-PBS. Detection antibody: 84966-4-PBS. Standard: Ag20001. Range: 1.563-100 ng/mL