

For Research Use Only

PSMC3IP Recombinant Matched Antibody Pair, PBS Only



Catalog Number:MP01685-2

Capture Antibody Information

Catalog Number:
84934-3-PBS

Host:
Rabbit

Isotype:
IgG

Purification Method:
Protein A purification

Clone ID:
242517E3

Reactivity:
human

Immunogen Catalog Number:
Ag1883

Conjugate:
Unconjugated

Full name:
PSMC3 interacting protein

Gene ID:
29893

Detection Antibody Information

Catalog Number:
84934-2-PBS

Host:
Rabbit

Isotype:
IgG

Purification Method:
Protein A purification

Clone ID:
242517D2

Reactivity:
human

GenBank:
BC008792

Immunogen Catalog Number:
Ag1883

Conjugate:
Unconjugated

Full name:
PSMC3 interacting protein

Gene ID:
29893

Applications

Tested Applications:
Cytometric bead array, Sandwich ELISA

Range:
0.625-80 ng/mL (Cytometric Bead Array)
39.1-2500 pg/mL (Sandwich ELISA)

Recommended Dilutions:
It is recommended that this reagent should be titrated in each testing system to obtain optimal results.

Product Information

MP01685-2 targets PSMC3IP in immunoassays as a matched antibody pair. Validated in Cytometric bead array, Sandwich ELISA.

Capture antibody: PSMC3IP Recombinant antibody, PBS Only (Capture) 84934-3-PBS (242517E3). 100 µg. Concentration 1 mg/mL.

Detection antibody: PSMC3IP Recombinant antibody, PBS Only (Detector) 84934-2-PBS (242517D2). 100 µg. Concentration 1 mg/mL.

Unconjugated rabbit recombinant monoclonal antibody pair in PBS only storage buffer at a concentration of 1 mg/mL, ready for conjugation. Created using Proteintech's proprietary in-house recombinant technology. Recombinant production enables unrivalled batch-to-batch consistency, easy scale-up, and future security of supply.

Matched antibody pairs are designed for use in a variety of assays and platforms that require matched antibody pairs.

Antibody use should be optimized for each application and assay.

Storage

Storage:
Store at -80°C.
Storage buffer:
PBS only

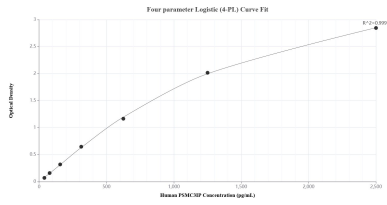
For technical support and original validation data for this product please contact:

T: 1 (888) 4PTGLAB (1-888-478-4522) (toll free in USA), or 1(312) 455-8498 (outside USA)

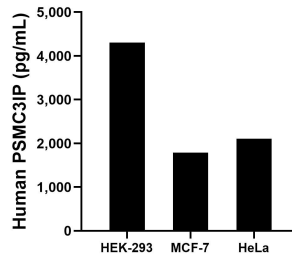
E: proteintech@ptglab.com
W: ptglab.com

This product is exclusively available under Proteintech Group brand and is not available to purchase from any other manufacturer.

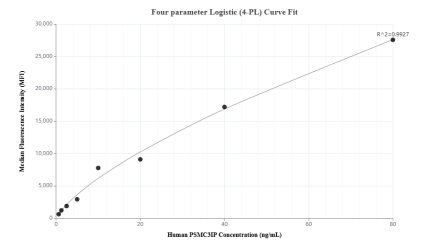
Selected Validation Data



Sandwich ELISA standard curve of MP01685-2, Human PSMC3IP Recombinant Matched Antibody Pair - PBS only. 84934-3-PBS was coated to a plate as the capture antibody and incubated with serial dilutions of standard Ag1883. 84934-2-PBS was HRP conjugated as the detection antibody. Range: 39.1-2500 pg/mL



The mean PSMC3IP concentration was determined to be 4,307.7 pg/mL in HEK-293 cell extract based on a 2.9 mg/mL extract load, 1,788.5 pg/mL in MCF-7 cell extract based on a 1.2 mg/mL extract load and 2,103.7 pg/mL in HeLa cell extract based on a 1.0 mg/mL extract load.



Cytometric bead array standard curve of MP01685-2, PSMC3IP Recombinant Matched Antibody Pair, PBS Only. Capture antibody: 84934-3-PBS. Detection antibody: 84934-2-PBS. Standard: Ag1883. Range: 0.625-80 ng/mL