

For Research Use Only

# CD93 Recombinant Matched Antibody Pair, PBS Only



Catalog Number:MP01683-3

## Capture Antibody Information

Catalog Number:

84945-2-PBS

Host:

Rabbit

Isotype:

IgG

Purification Method:

Protein A purification

Clone ID:

242464G6

Reactivity:

human

Conjugate:

Unconjugated

Full name:

CD93 molecule

Gene ID:

22918

## Detection Antibody Information

Catalog Number:

84945-3-PBS

Host:

Rabbit

Isotype:

IgG

Purification Method:

Protein A purification

Clone ID:

242464H4

Reactivity:

human

GenBank:

NM\_012072.3

Conjugate:

Unconjugated

Full name:

CD93 molecule

Gene ID:

22918

## Applications

Tested Applications:

Sandwich ELISA

Range:

78.1-5000 pg/mL (Sandwich ELISA)

Recommended Dilutions:

It is recommended that this reagent should be titrated in each testing system to obtain optimal results.

## Product Information

MP01683-3 targets CD93 in immunoassays as a matched antibody pair. Validated in Sandwich ELISA.

Capture antibody: CD93 Recombinant antibody, PBS Only (Capture/Detector) 84945-2-PBS (242464G6). 100 µg. Concentration 1 mg/ml.

Detection antibody: CD93 Recombinant antibody, PBS Only (Detector) 84945-3-PBS (242464H4). 100 µg. Concentration 1 mg/ml.

Unconjugated rabbit recombinant monoclonal antibody pair in PBS only storage buffer at a concentration of 1 mg/mL, ready for conjugation. Created using Proteintech's proprietary in-house recombinant technology. Recombinant production enables unrivalled batch-to-batch consistency, easy scale-up, and future security of supply.

Matched antibody pairs are designed for use in a variety of assays and platforms that require matched antibody pairs.

Antibody use should be optimized for each application and assay.

## Storage

Storage:

Store at -80°C.

Storage buffer:

PBS only

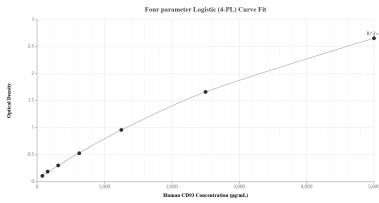
For technical support and original validation data for this product please contact:

T: 1 (888) 4PTGLAB (1-888-478-4522) (toll free in USA), or 1(312) 455-8498 (outside USA)

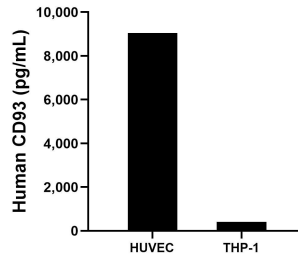
E: [proteintech@ptglab.com](mailto:proteintech@ptglab.com)  
W: [ptglab.com](http://ptglab.com)

This product is exclusively available under Proteintech Group brand and is not available to purchase from any other manufacturer.

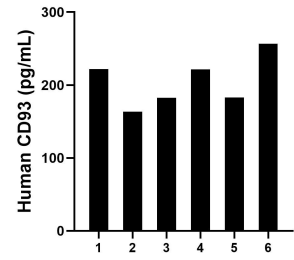
## Selected Validation Data



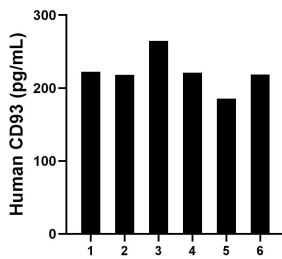
Sandwich ELISA standard curve of MP01683-3, Human CD93 Recombinant Matched Antibody Pair - PBS only. 84945-2-PBS was coated to a plate as the capture antibody and incubated with serial dilutions of standard Eg2794. 84945-3-PBS was HRP conjugated as the detection antibody. Range: 78.1-5000 pg/mL.



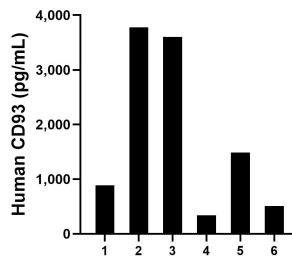
HUVEC and THP-1 cells were cultured in DMEM supplemented with 10% fetal bovine serum, 2.5 mM L-glutamine, 100 U/mL penicillin and 100 µg/mL streptomycin sulfate, respectively. Aliquots of the cell culture supernate were removed, assayed for human CD93, and measured 9,051.4 pg/mL and 406.3 pg/mL, respectively.



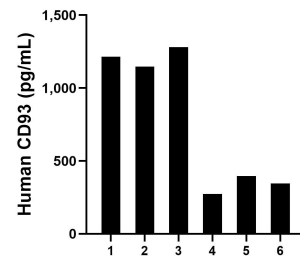
Serum of six individual healthy human donors was measured. The CD93 concentration of detected samples was determined to be 204.8 pg/mL with a range of 163.5-256.8 pg/mL.



Plasma of six individual healthy human donors was measured. The CD93 concentration of detected samples was determined to be 221.7 pg/mL with a range of 185.4-264.8 pg/mL.



Urine of six individual healthy human donors was measured. The CD93 concentration of detected samples was determined to be 1,768.1 pg/mL with a range of 340.0-3,778.7 pg/mL.



Saliva of six individual healthy human donors was measured. The CD93 concentration of detected samples was determined to be 776.7 pg/mL with a range of 273.6-1,280.6 pg/mL.