

For Research Use Only

CNDP2 Recombinant Matched Antibody Pair, PBS Only



Catalog Number:MP01668-3

Capture Antibody Information

Catalog Number:
84924-5-PBS
Host:
Rabbit
Isotype:
IgG
Purification Method:
Protein A purification

Clone ID:
242373F9
Reactivity:
human
Immunogen Catalog Number:
Ag6684

Conjugate:
Unconjugated
Full name:
CNDP dipeptidase 2
(metallopeptidase M20 family)
Gene ID:
55748

Detection Antibody Information

Catalog Number:
84924-4-PBS
Host:
Rabbit
Isotype:
IgG
Purification Method:
Protein A purification

Clone ID:
242373D12
Reactivity:
human
GenBank:
BC001375
Immunogen Catalog Number:
Ag6684

Conjugate:
Unconjugated
Full name:
CNDP dipeptidase 2
(metallopeptidase M20 family)
Gene ID:
55748

Applications

Tested Applications:
Sandwich ELISA

Range:
0.781-50 ng/mL (Sandwich ELISA)

Recommended Dilutions:
It is recommended that this reagent should be titrated in each testing system to obtain optimal results.

Product Information

MP01668-3 targets CNDP2 in immunoassays as a matched antibody pair. Validated in Sandwich ELISA.

Capture antibody: CNDP2 Recombinant antibody, PBS Only (Capture) 84924-5-PBS (242373F9). 100 µg. Concentration 1 mg/ml.

Detection antibody: CNDP2 Recombinant antibody, PBS Only (Detector) 84924-4-PBS (242373D12). 100 µg. Concentration 1 mg/ml.

Unconjugated rabbit recombinant monoclonal antibody pair in PBS only storage buffer at a concentration of 1 mg/mL, ready for conjugation. Created using Proteintech's proprietary in-house recombinant technology. Recombinant production enables unrivalled batch-to-batch consistency, easy scale-up, and future security of supply.

Matched antibody pairs are designed for use in a variety of assays and platforms that require matched antibody pairs.

Antibody use should be optimized for each application and assay.

Storage

Storage:
Store at -80°C.
Storage buffer:
PBS only

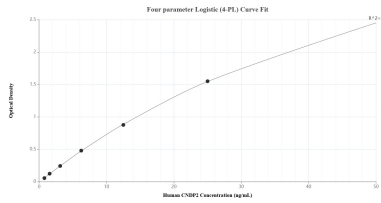
For technical support and original validation data for this product please contact:

T: 1 (888) 4PTGLAB (1-888-478-4522) (toll free in USA), or 1(312) 455-8498 (outside USA)

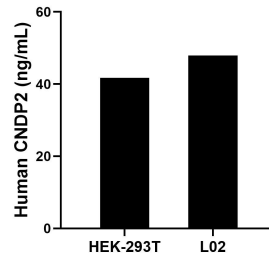
E: proteintech@ptglab.com
W: ptglab.com

This product is exclusively available under Proteintech Group brand and is not available to purchase from any other manufacturer.

Selected Validation Data



Sandwich ELISA standard curve of MP01668-3, Human CNDP2 Recombinant Matched Antibody Pair - PBS only. 84924-5-PBS was coated to a plate as the capture antibody and incubated with serial dilutions of standard Ag6684. 84924-4-PBS was HRP conjugated as the detection antibody. Range: 0.781-50 ng/mL



The mean CNDP2 concentration was determined to be 41.75 ng/mL in HEK-293T cell extract based on a 3.20 mg/mL extract load and 47.91 ng/mL in L02 cell extract based on a 1.30 mg/mL extract load.