

For Research Use Only

Complement factor D Recombinant Matched Antibody Pair, PBS Only



Catalog Number:MP01660-3

Capture Antibody Information

Catalog Number:
84851-2-PBS
Host:
Rabbit
Isotype:
IgG
Purification Method:
Protein A purification

Clone ID:
242244B6
Reactivity:
human

Conjugate:
Unconjugated
Full name:
complement factor D (adipsin)
Gene ID:
1675

Detection Antibody Information

Catalog Number:
84851-4-PBS
Host:
Rabbit
Isotype:
IgG
Purification Method:
Protein A purification

Clone ID:
242244C2
Reactivity:
human, mouse
GenBank:
NM_001928.3

Conjugate:
Unconjugated
Full name:
complement factor D (adipsin)
Gene ID:
1675

Applications

Tested Applications:
Sandwich ELISA

Range:
4.69-300 pg/mL (Sandwich ELISA)

Recommended Dilutions:
It is recommended that this reagent should be titrated in each testing system to obtain optimal results.

Product Information

MP01660-3 targets Complement factor D in immunoassays as a matched antibody pair. Validated in Sandwich ELISA.

Capture antibody: Complement factor D Recombinant antibody, PBS Only (Capture) 84851-2-PBS (242244B6). 100 µg. Concentration 1 mg/mL.

Detection antibody: Complement factor D Recombinant antibody, PBS Only (Detector) 84851-4-PBS (242244C2). 100 µg. Concentration 1 mg/mL.

Unconjugated rabbit recombinant monoclonal antibody pair in PBS only storage buffer at a concentration of 1 mg/mL, ready for conjugation. Created using Proteintech's proprietary in-house recombinant technology. Recombinant production enables unrivalled batch-to-batch consistency, easy scale-up, and future security of supply.

Matched antibody pairs are designed for use in a variety of assays and platforms that require matched antibody pairs.

Antibody use should be optimized for each application and assay.

Storage

Storage:
Store at -80°C.
Storage buffer:
PBS only

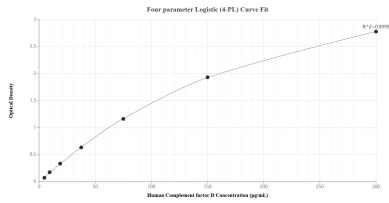
For technical support and original validation data for this product please contact:

T: 1 (888) 4PTGLAB (1-888-478-4522) (toll free in USA), or 1(312) 455-8498 (outside USA)

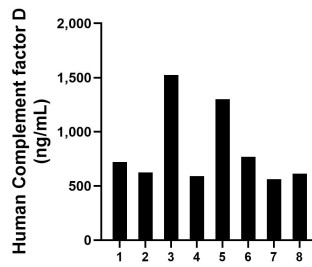
E: proteintech@ptglab.com
W: ptglab.com

This product is exclusively available under Proteintech Group brand and is not available to purchase from any other manufacturer.

Selected Validation Data



Sandwich ELISA standard curve of MP01660-3, Human Complement factor D Recombinant Matched Antibody Pair - PBS only. 84851-2-PBS was coated to a plate as the capture antibody and incubated with serial dilutions of standard Eg1189. 84851-4-PBS was HRP conjugated as the detection antibody. Range: 4.69-300 pg/mL



Serum of eight individual healthy human donors was measured. The Complement factor D concentration of detected samples was determined to be 838.5 ng/mL with a range of 561.9-1525.4 ng/mL