

For Research Use Only

# PISD Recombinant Matched Antibody Pair, PBS Only



Catalog Number:MP01640-2

## Capture Antibody Information

Catalog Number:

84866-3-PBS

Host:

Rabbit

Isotype:

IgG

Purification Method:

Protein A purification

Clone ID:

242280D12

Reactivity:

human

Immunogen Catalog Number:

Ag9499

Conjugate:

Unconjugated

Full name:

phosphatidylserine decarboxylase

Gene ID:

23761

## Detection Antibody Information

Catalog Number:

84866-2-PBS

Host:

Rabbit

Isotype:

IgG

Purification Method:

Protein A purification

Clone ID:

242280C9

Reactivity:

human

GenBank:

BC001482

Immunogen Catalog Number:

Ag9499

Conjugate:

Unconjugated

Full name:

phosphatidylserine decarboxylase

Gene ID:

23761

## Applications

Tested Applications:

Sandwich ELISA

Range:

0.391-25 ng/mL (Sandwich ELISA)

Recommended Dilutions:

It is recommended that this reagent should be titrated in each testing system to obtain optimal results.

## Product Information

MP01640-2 targets PISD in immunoassays as a matched antibody pair. Validated in Sandwich ELISA.

Capture antibody: PISD Recombinant antibody, PBS Only (Capture) 84866-3-PBS (242280D12). 100 µg. Concentration 1 mg/ml.

Detection antibody: PISD Recombinant antibody, PBS Only (Detector) 84866-2-PBS (242280C9). 100 µg. Concentration 1 mg/ml.

Unconjugated rabbit recombinant monoclonal antibody pair in PBS only storage buffer at a concentration of 1 mg/mL, ready for conjugation. Created using Proteintech's proprietary in-house recombinant technology. Recombinant production enables unrivalled batch-to-batch consistency, easy scale-up, and future security of supply.

Matched antibody pairs are designed for use in a variety of assays and platforms that require matched antibody pairs.

Antibody use should be optimized for each application and assay.

## Storage

Storage:

Store at -80°C.

Storage buffer:

PBS only

For technical support and original validation data for this product please contact:

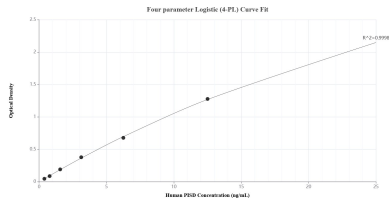
T: 1 (888) 4PTGLAB (1-888-478-4522) (toll free in USA), or 1(312) 455-8498 (outside USA)

E: [proteintech@ptglab.com](mailto:proteintech@ptglab.com)

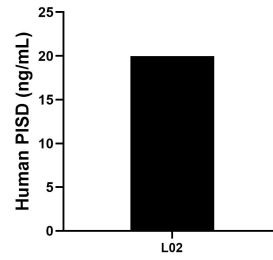
W: [ptglab.com](http://ptglab.com)

This product is exclusively available under Proteintech Group brand and is not available to purchase from any other manufacturer.

## Selected Validation Data



Sandwich ELISA standard curve of MP01640-2, Human P1SD Recombinant Matched Antibody Pair - PBS only. 84866-3-PBS was coated to a plate as the capture antibody and incubated with serial dilutions of standard Ag9499. 84866-2-PBS was HRP conjugated as the detection antibody. Range: 0.391-25 ng/mL



The mean P1SD concentration was determined to be 19.97 ng/mL in L02 cell extract based on a 1.30 mg/mL extract load.