

For Research Use Only

# CHRNA3 Recombinant Matched Antibody Pair, PBS Only



Catalog Number:MP01633-3

## Capture Antibody Information

Catalog Number:  
84860-1-PBS

Host:  
Rabbit

Isotype:  
IgG

Purification Method:  
Protein A purification

Clone ID:  
242410A7

Reactivity:  
human

Immunogen Catalog Number:  
Ag0272

Conjugate:  
Unconjugated

Full name:  
cholinergic receptor, nicotinic, alpha 3

Gene ID:  
1136

## Detection Antibody Information

Catalog Number:  
84860-4-PBS

Host:  
Rabbit

Isotype:  
IgG

Purification Method:  
Protein A purification

Clone ID:  
242410B1

Reactivity:  
human

GenBank:  
BC000513

Immunogen Catalog Number:  
Ag0272

Conjugate:  
Unconjugated

Full name:  
cholinergic receptor, nicotinic, alpha 3

Gene ID:  
1136

## Applications

Tested Applications:  
Sandwich ELISA

Range:  
1.56-100 ng/mL (Sandwich ELISA)

Recommended Dilutions:  
It is recommended that this reagent should be titrated in each testing system to obtain optimal results.

## Product Information

MP01633-3 targets CHRNA3 in immunoassays as a matched antibody pair. Validated in Sandwich ELISA.

Capture antibody: CHRNA3 Recombinant antibody, PBS Only (Capture/Detector) 84860-1-PBS (242410A7). 100 µg. Concentration 1 mg/ml.

Detection antibody: CHRNA3 Recombinant antibody, PBS Only (Detector) 84860-4-PBS (242410B1). 100 µg. Concentration 1 mg/ml.

Unconjugated rabbit recombinant monoclonal antibody pair in PBS only storage buffer at a concentration of 1 mg/mL, ready for conjugation. Created using Proteintech's proprietary in-house recombinant technology. Recombinant production enables unrivalled batch-to-batch consistency, easy scale-up, and future security of supply.

Matched antibody pairs are designed for use in a variety of assays and platforms that require matched antibody pairs.

Antibody use should be optimized for each application and assay.

## Storage

Storage:  
Store at -80°C.  
Storage buffer:  
PBS only

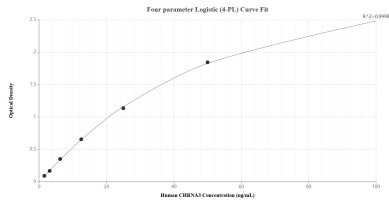
For technical support and original validation data for this product please contact:

T: 1 (888) 4PTGLAB (1-888-478-4522) (toll free in USA), or 1(312) 455-8498 (outside USA)

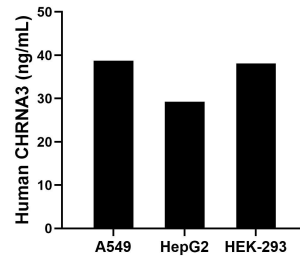
E: [proteintech@ptglab.com](mailto:proteintech@ptglab.com)  
W: [ptglab.com](http://ptglab.com)

This product is exclusively available under Proteintech Group brand and is not available to purchase from any other manufacturer.

## Selected Validation Data



Sandwich ELISA standard curve of MP01633-3, Human CHRNA3 Recombinant Matched Antibody Pair - PBS only. 84860-1-PBS was coated to a plate as the capture antibody and incubated with serial dilutions of standard Ag0272. 84860-4-PBS was HRP conjugated as the detection antibody. Range: 1.56-100 ng/mL



The mean CHRNA3 concentration was determined to be 38.77 ng/mL in A549 cell extract based on a 1.50 mg/mL extract load, 29.25 ng/mL in HepG2 cell extract based on a 1.00 mg/mL extract load and 38.10 ng/mL in HEK-293 cell extract based on a 2.90 mg/mL extract load.