

For Research Use Only

C9 Recombinant Matched Antibody Pair, PBS Only



Catalog Number:MP01620-3

Capture Antibody Information

Catalog Number:
84890-5-PBS

Host:
Rabbit

Isotype:
IgG

Purification Method:
Protein A purification

Clone ID:
242475E4

Reactivity:
human

Conjugate:
Unconjugated

Full name:
complement component 9

Gene ID:
735

Detection Antibody Information

Catalog Number:
84890-3-PBS

Host:
Rabbit

Isotype:
IgG

Purification Method:
Protein A purification

Clone ID:
242475F3

Reactivity:
human

GenBank:
NM_001737.4

Conjugate:
Unconjugated

Full name:
complement component 9

Gene ID:
735

Applications

Tested Applications:
Sandwich ELISA

Range:
195.3-6250 pg/mL (Sandwich ELISA)

Recommended Dilutions:
It is recommended that this reagent should be titrated in each testing system to obtain optimal results.

Product Information

MP01620-3 targets C9 in immunoassays as a matched antibody pair. Validated in Sandwich ELISA.

Capture antibody: Component C9 Recombinant antibody, PBS Only (Capture) 84890-5-PBS (242475E4). 100 µg. Concentration 1 mg/ml.

Detection antibody: Component C9 Recombinant antibody, PBS Only (Capture/Detector) 84890-3-PBS (242475F3). 100 µg. Concentration 1 mg/ml.

Unconjugated rabbit recombinant monoclonal antibody pair in PBS only storage buffer at a concentration of 1 mg/mL, ready for conjugation. Created using Proteintech's proprietary in-house recombinant technology. Recombinant production enables unrivalled batch-to-batch consistency, easy scale-up, and future security of supply.

Matched antibody pairs are designed for use in a variety of assays and platforms that require matched antibody pairs.

Antibody use should be optimized for each application and assay.

Storage

Storage:
Store at -80°C.
Storage buffer:
PBS only

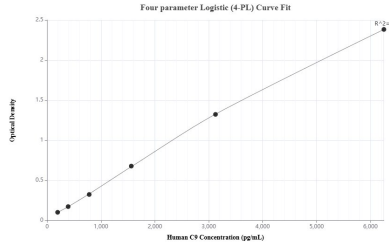
For technical support and original validation data for this product please contact:

T: 1 (888) 4PTGLAB (1-888-478-4522) (toll free in USA), or 1(312) 455-8498 (outside USA)

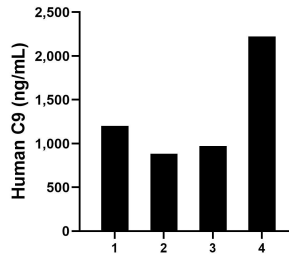
E: proteintech@ptglab.com
W: ptglab.com

This product is exclusively available under Proteintech Group brand and is not available to purchase from any other manufacturer.

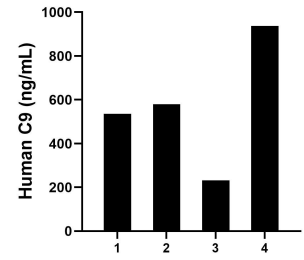
Selected Validation Data



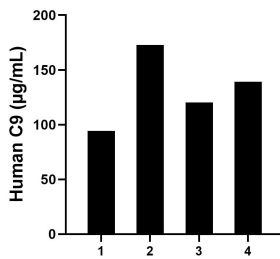
Sandwich ELISA standard curve of MP01620-3, Human C9 Recombinant Matched Antibody Pair - PBS only. 84890-5-PBS was coated to a plate as the capture antibody and incubated with serial dilutions of standard Eg1282. 84890-3-PBS was HRP conjugated as the detection antibody. Range: 195.3-6250 µg/mL



Tears of four individual healthy human donors was measured. The human C9 concentration of detected samples was determined to be 1,320.67 ng/mL with a range of 882.22 - 2,224.25 ng/mL



Human milk of four individual healthy human donors was measured. The human C9 concentration of detected samples was determined to be 570.94 ng/mL with a range of 230.92 - 937.80 ng/mL



Serum of four individual healthy human donors was measured. The human C9 concentration of detected samples was determined to be 131.61 µg/mL with a range of 94.28 - 172.80 µg/mL