

For Research Use Only

CD16a Recombinant Matched Antibody Pair, PBS Only



Catalog Number:MP01617-3

Capture Antibody Information

Catalog Number:

84897-2-PBS

Host:

Rabbit

Isotype:

IgG

Purification Method:

Protein A purification

Clone ID:

242426E9

Reactivity:

human

Conjugate:

Unconjugated

Full name:

Fc fragment of IgG, low affinity IIIa, receptor (CD16a)

Gene ID:

2214

Detection Antibody Information

Catalog Number:

84897-4-PBS

Host:

Rabbit

Isotype:

IgG

Purification Method:

Protein A purification

Clone ID:

242426A11

Reactivity:

human

GenBank:

Conjugate:

Unconjugated

Full name:

Fc fragment of IgG, low affinity IIIa, receptor (CD16a)

Gene ID:

2214

Applications

Tested Applications:

Sandwich ELISA

Range:

156.3-5000 pg/mL (Sandwich ELISA)

Recommended Dilutions:

It is recommended that this reagent should be titrated in each testing system to obtain optimal results.

Product Information

MP01617-3 targets CD16a in immunoassays as a matched antibody pair. Validated in Sandwich ELISA.

Capture antibody: CD16a Recombinant antibody, PBS Only (Capture/Detector) 84897-2-PBS (242426E9). 100 µg. Concentration 1 mg/ml.

Detection antibody: CD16a Recombinant antibody, PBS Only (Detector) 84897-4-PBS (242426A11). 100 µg. Concentration 1 mg/ml.

Unconjugated rabbit recombinant monoclonal antibody pair in PBS only storage buffer at a concentration of 1 mg/mL, ready for conjugation. Created using Proteintech's proprietary in-house recombinant technology. Recombinant production enables unrivalled batch-to-batch consistency, easy scale-up, and future security of supply.

Matched antibody pairs are designed for use in a variety of assays and platforms that require matched antibody pairs.

Antibody use should be optimized for each application and assay.

Storage

Storage:

Store at -80°C.

Storage buffer:

PBS only

For technical support and original validation data for this product please contact:

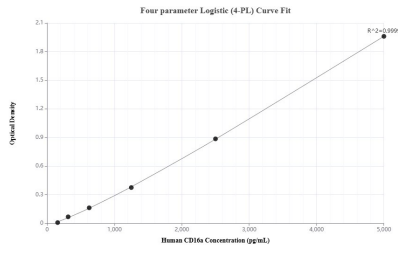
T: 1 (888) 4PTGLAB (1-888-478-4522) (toll free in USA), or 1(312) 455-8498 (outside USA)

E: proteintech@ptglab.com

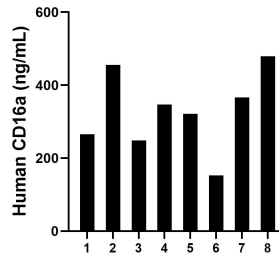
W: ptglab.com

This product is exclusively available under Proteintech Group brand and is not available to purchase from any other manufacturer.

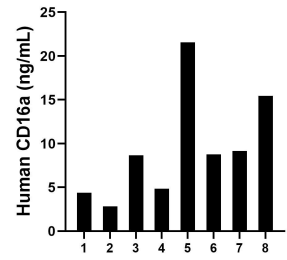
Selected Validation Data



Sandwich ELISA standard curve of MP01617-3, Human CD16a Recombinant Matched Antibody Pair - PBS only. 84897-2-PBS was coated to a plate as the capture antibody and incubated with serial dilutions of standard Eg2488. 84897-4-PBS was HRP conjugated as the detection antibody. Range: 156.3-5000 pg/mL



Serum of eight individual healthy human donors was measured. The human CD16a concentration of detected samples was determined to be 329.57 ng/mL with a range of 152.51- 455.59 ng/mL



Urine of eight individual healthy human donors was measured. The human CD16a concentration of detected samples was determined to be 9.45 ng/mL with a range of 2.83 - 21.56 ng/mL