

For Research Use Only

Serotonin transporter Recombinant Matched Antibody Pair, PBS Only



Catalog Number:MP01613-1

Capture Antibody Information

Catalog Number:
84844-2-PBS
Host:
Rabbit
Isotype:
IgG
Purification Method:
Protein A purification

Clone ID:
242252G5
Reactivity:
human

Conjugate:
Unconjugated
Full name:
solute carrier family 6
(neurotransmitter transporter,
serotonin), member 4
Gene ID:
6532

Detection Antibody Information

Catalog Number:
84844-1-PBS
Host:
Rabbit
Isotype:
IgG
Purification Method:
Protein A purification

Clone ID:
242252A11
Reactivity:
human
GenBank:
NM_001045

Conjugate:
Unconjugated
Full name:
solute carrier family 6
(neurotransmitter transporter,
serotonin), member 4
Gene ID:
6532

Applications

Tested Applications:
Sandwich ELISA

Range:
3.91-250 pg/mL (Sandwich ELISA)

Recommended Dilutions:
It is recommended that this reagent should be titrated in each testing system to obtain optimal results.

Product Information

MP01613-1 targets Serotonin transporter in immunoassays as a matched antibody pair. Validated in Sandwich ELISA.

Capture antibody: SLC6A4 Recombinant antibody, PBS Only (Capture) 84844-2-PBS (242252G5). 100 µg. Concentration 1 mg/ml.

Detection antibody: SLC6A4 Recombinant antibody, PBS Only (Detector) 84844-1-PBS (242252A11). 100 µg. Concentration 1 mg/ml.

Unconjugated rabbit recombinant monoclonal antibody pair in PBS only storage buffer at a concentration of 1 mg/mL, ready for conjugation. Created using Proteintech's proprietary in-house recombinant technology. Recombinant production enables unrivalled batch-to-batch consistency, easy scale-up, and future security of supply.

Matched antibody pairs are designed for use in a variety of assays and platforms that require matched antibody pairs.

Antibody use should be optimized for each application and assay.

Storage

Storage:
Store at -80°C.
Storage buffer:
PBS only

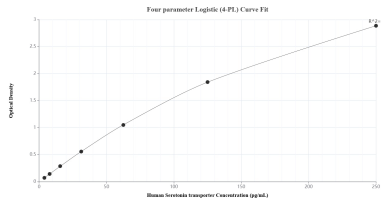
For technical support and original validation data for this product please contact:

T: 1 (888) 4PTGLAB (1-888-478-4522) (toll free in USA), or 1(312) 455-8498 (outside USA)

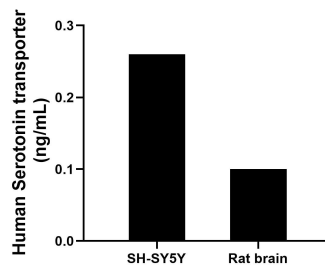
E: proteintech@ptglab.com
W: ptglab.com

This product is exclusively available under Proteintech Group brand and is not available to purchase from any other manufacturer.

Selected Validation Data



Sandwich ELISA standard curve of MP01613-1, Human Serotonin transporter Recombinant Matched Antibody Pair - PBS only. 84844-2-PBS was coated to a plate as the capture antibody and incubated with serial dilutions of standard SY00407. 84844-1-PBS was HRP conjugated as the detection antibody. Range: 3.91-250 pg/mL



The mean Serotonin transporter concentration was determined to be 0.3 ng/mL in SH-SY5Y cell extract based on a 1.0 mg/mL extract load and 0.1 ng/mL in rat brain cell extract based on a 1.6 mg/mL extract load.