

For Research Use Only

HCN1 Recombinant Matched Antibody Pair, PBS Only



Catalog Number:MP01612-1

Capture Antibody Information

Catalog Number:
84845-1-PBS
Host:
Rabbit
Isotype:
IgG
Purification Method:
Protein A purification

Clone ID:
242254B1
Reactivity:
human

Conjugate:
Unconjugated
Full name:
hyperpolarization activated cyclic nucleotide-gated potassium channel 1
Gene ID:
348980

Detection Antibody Information

Catalog Number:
84845-2-PBS
Host:
Rabbit
Isotype:
IgG
Purification Method:
Protein A purification

Clone ID:
242254F1
Reactivity:
human
GenBank:
NM_021072

Conjugate:
Unconjugated
Full name:
hyperpolarization activated cyclic nucleotide-gated potassium channel 1
Gene ID:
348980

Applications

Tested Applications:
Sandwich ELISA

Range:
19.5-1250 pg/mL (Sandwich ELISA)

Recommended Dilutions:
It is recommended that this reagent should be titrated in each testing system to obtain optimal results.

Product Information

MP01612-1 targets HCN1 in immunoassays as a matched antibody pair. Validated in Sandwich ELISA.
Capture antibody: HCN1 Recombinant antibody, PBS Only (Capture) 84845-1-PBS (242254B1). 100 µg. Concentration 1 mg/ml.
Detection antibody: HCN1 Recombinant antibody, PBS Only (Detector) 84845-2-PBS (242254F1). 100 µg. Concentration 1 mg/ml.
Unconjugated rabbit recombinant monoclonal antibody pair in PBS only storage buffer at a concentration of 1 mg/mL, ready for conjugation. Created using Proteintech's proprietary in-house recombinant technology. Recombinant production enables unrivalled batch-to-batch consistency, easy scale-up, and future security of supply.
Matched antibody pairs are designed for use in a variety of assays and platforms that require matched antibody pairs.
Antibody use should be optimized for each application and assay.

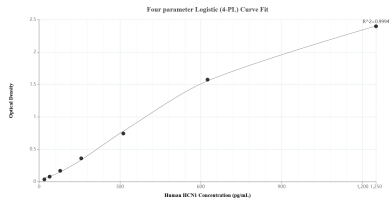
Storage

Storage:
Store at -80°C.
Storage buffer:
PBS only

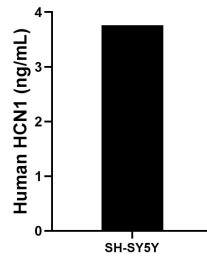
For technical support and original validation data for this product please contact:
T: 1 (888) 4PTGLAB (1-888-478-4522) (toll free in USA), or 1(312) 455-8498 (outside USA) E: proteintech@ptglab.com W: ptglab.com

This product is exclusively available under Proteintech Group brand and is not available to purchase from any other manufacturer.

Selected Validation Data



Sandwich ELISA standard curve of MP01612-1, Human HCN1 Recombinant Matched Antibody Pair - PBS only. 84845-1-PBS was coated to a plate as the capture antibody and incubated with serial dilutions of standard SY01279. 84845-2-PBS was HRP conjugated as the detection antibody. Range: 19.5-1250 pg/mL.



The mean HCN1 concentration was determined to be 3.8 ng/mL in SH-SY5Y cell extract based on a 1.0 mg/mL extract load.