

For Research Use Only

RELB Recombinant Matched Antibody Pair, PBS Only



Catalog Number:MP01583-1

Capture Antibody Information

Catalog Number:
83305-4-PBS
Host:
Rabbit
Isotype:
IgG
Purification Method:
Protein A purification

Clone ID:
242336E11
Reactivity:
human
Immunogen Catalog Number:
Ag13824

Conjugate:
Unconjugated
Full name:
v-rel reticuloendotheliosis viral oncogene homolog B
Gene ID:
5971

Detection Antibody Information

Catalog Number:
83305-5-PBS
Host:
Rabbit
Isotype:
IgG
Purification Method:
Protein A purification

Clone ID:
242336G3
Reactivity:
human
GenBank:
BC028013
Immunogen Catalog Number:
Ag13824

Conjugate:
Unconjugated
Full name:
v-rel reticuloendotheliosis viral oncogene homolog B
Gene ID:
5971

Applications

Tested Applications:
Cytometric bead array, Sandwich ELISA

Range:
0.781-100 ng/mL (Cytometric Bead Array)
39.1-2500 pg/mL (Sandwich ELISA)

Recommended Dilutions:
It is recommended that this reagent should be titrated in each testing system to obtain optimal results.

Product Information

MP01583-1 targets RELB in immunoassays as a matched antibody pair. Validated in Cytometric bead array, Sandwich ELISA.

Capture antibody: RELB Recombinant antibody, PBS Only (Capture) 83305-4-PBS (242336E11). 100 µg. Concentration 1 mg/mL.

Detection antibody: RELB Recombinant antibody, PBS Only (Detector) 83305-5-PBS (242336G3). 100 µg. Concentration 1 mg/mL.

Unconjugated rabbit recombinant monoclonal antibody pair in PBS only storage buffer at a concentration of 1 mg/mL, ready for conjugation. Created using Proteintech's proprietary in-house recombinant technology. Recombinant production enables unrivalled batch-to-batch consistency, easy scale-up, and future security of supply.

Matched antibody pairs are designed for use in a variety of assays and platforms that require matched antibody pairs.

Antibody use should be optimized for each application and assay.

Storage

Storage:
Store at -80°C.
Storage buffer:
PBS only

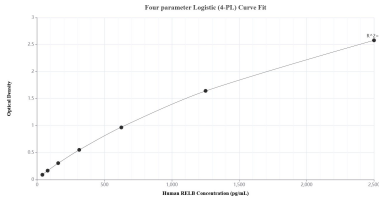
For technical support and original validation data for this product please contact:

T: 1 (888) 4PTGLAB (1-888-478-4522) (toll free in USA), or 1(312) 455-8498 (outside USA)

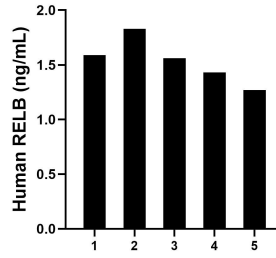
E: proteintech@ptglab.com
W: ptglab.com

This product is exclusively available under Proteintech Group brand and is not available to purchase from any other manufacturer.

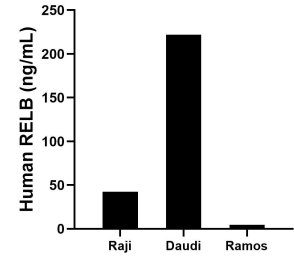
Selected Validation Data



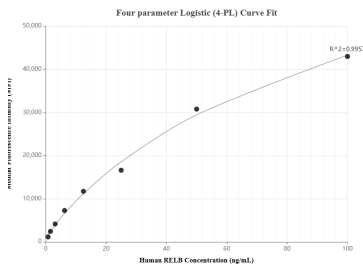
Sandwich ELISA standard curve of MP01583-1, Human RELB Recombinant Matched Antibody Pair - PBS only. 83305-4-PBS was coated to a plate as the capture antibody and incubated with serial dilutions of standard Ag13824. 83305-5-PBS was HRP conjugated as the detection antibody. Range: 39.1-2500 pg/mL



Serum of five individual healthy human donors was measured. The RELB concentration of detected samples was determined to be 1.5 ng/mL with a range of 1.3-1.8 ng/mL



The mean RELB concentration was determined to be 42.5 ng/mL in Raji cell extract based on a 1.4 mg/mL extract load, 221.9 ng/mL in Daudi cell extract based on a 3.6 mg/mL extract load and 4.5 ng/mL in Ramos cell extract based on a 1.4 mg/mL extract load.



Cytometric bead array standard curve of MP01583-1, RELB Recombinant Matched Antibody Pair, PBS Only. Capture antibody: 83305-4-PBS. Detection antibody: 83305-5-PBS. Standard: Ag13824. Range: 0.781-100 ng/mL