

For Research Use Only

HRAS Recombinant Matched Antibody Pair, PBS Only



Catalog Number:MP01568-1

Capture Antibody Information

Catalog Number:
82682-11-PBS
Host:
Rabbit
Isotype:
IgG
Purification Method:
Protein A purification

Clone ID:
242062B5
Reactivity:
human

Conjugate:
Unconjugated
Full name:
v-Ha-ras Harvey rat sarcoma viral oncogene homolog
Gene ID:
3265

Detection Antibody Information

Catalog Number:
82682-10-PBS
Host:
Rabbit
Isotype:
IgG
Purification Method:
Protein A purification

Clone ID:
242062A4
Reactivity:
human
GenBank:
BC006499

Conjugate:
Unconjugated
Full name:
v-Ha-ras Harvey rat sarcoma viral oncogene homolog
Gene ID:
3265

Applications

Tested Applications:
Sandwich ELISA

Range:
31.3-2000 pg/mL (Sandwich ELISA)

Recommended Dilutions:
It is recommended that this reagent should be titrated in each testing system to obtain optimal results.

Product Information

MP01568-1 targets HRAS in immunoassays as a matched antibody pair. Validated in Sandwich ELISA.

Capture antibody: HRAS-Specific Recombinant antibody, PBS Only (Capture) 82682-11-PBS (242062B5). 100 µg. Concentration 1 mg/mL.

Detection antibody: HRAS-Specific Recombinant antibody, PBS Only (Detector) 82682-10-PBS (242062A4). 100 µg. Concentration 1 mg/mL.

Unconjugated rabbit recombinant monoclonal antibody pair in PBS only storage buffer at a concentration of 1 mg/mL, ready for conjugation. Created using Proteintech's proprietary in-house recombinant technology. Recombinant production enables unrivalled batch-to-batch consistency, easy scale-up, and future security of supply.

Matched antibody pairs are designed for use in a variety of assays and platforms that require matched antibody pairs.

Antibody use should be optimized for each application and assay.

Storage

Storage:
Store at -80°C.
Storage buffer:
PBS only

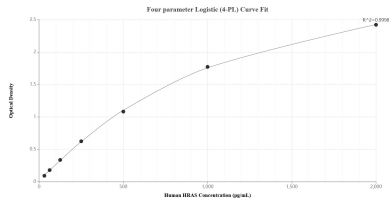
For technical support and original validation data for this product please contact:

T: 1 (888) 4PTGLAB (1-888-478-4522) (toll free in USA), or 1(312) 455-8498 (outside USA)

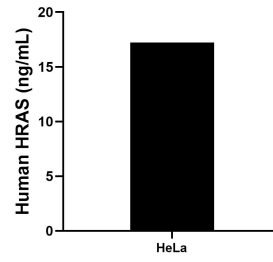
E: proteintech@ptglab.com
W: ptglab.com

This product is exclusively available under Proteintech Group brand and is not available to purchase from any other manufacturer.

Selected Validation Data



Sandwich ELISA standard curve of MP01568-1, Human HRAS Recombinant Matched Antibody Pair - PBS only. 82682-11-PBS was coated to a plate as the capture antibody and incubated with serial dilutions of standard SY00167. 82682-10-PBS was HRP conjugated as the detection antibody. Range: 31.3-2000 pg/mL.



The mean HRAS concentration was determined to be 17.2 ng/mL in HeLa cell extract based on a 1.3 mg/mL extract load.