

PSMD14/POH1 Recombinant Matched Antibody Pair, PBS Only

Catalog Number:MP01566-3

Capture Antibody Information

Catalog Number:

84767-1-PBS

Host:

Rabbit

Isotype:

IgG

Purification Method:

Protein A purification

Clone ID:

242160C12

Reactivity:

human

Immunogen Catalog Number:

Ag2694

Conjugate:

Unconjugated

Full name:

proteasome (prosome, macropain)
26S subunit, non-ATPase, 14

Gene ID:

10213

Detection Antibody Information

Catalog Number:

84767-3-PBS

Host:

Rabbit

Isotype:

IgG

Purification Method:

Protein A purification

Clone ID:

242160E7

Reactivity:

human

GenBank:

BC009524

Immunogen Catalog Number:

Ag2694

Conjugate:

Unconjugated

Full name:

proteasome (prosome, macropain)
26S subunit, non-ATPase, 14

Gene ID:

10213

Applications

Tested Applications:

Sandwich ELISA

Range:

78.1-5000 pg/mL (Sandwich ELISA)

Recommended Dilutions:

It is recommended that this reagent should be titrated in each testing system to obtain optimal results.

Product Information

MP01566-3 targets PSMD14/POH1 in immunoassays as a matched antibody pair. Validated in Sandwich ELISA.

Capture antibody: PSMD14/POH1 Recombinant antibody, PBS Only (Capture/Detector) 84767-1-PBS (242160C12).
100 µg. Concentration 1 mg/ml.

Detection antibody: PSMD14/POH1 Recombinant antibody, PBS Only (Capture/Detector) 84767-3-PBS (242160E7).
100 µg. Concentration 1 mg/ml.

Unconjugated rabbit recombinant monoclonal antibody pair in PBS only storage buffer at a concentration of 1 mg/mL, ready for conjugation. Created using Proteintech's proprietary in-house recombinant technology. Recombinant production enables unrivalled batch-to-batch consistency, easy scale-up, and future security of supply.

Matched antibody pairs are designed for use in a variety of assays and platforms that require matched antibody pairs.

Antibody use should be optimized for each application and assay.

Storage

Storage:

Store at -80°C.

Storage buffer:

PBS only

For technical support and original validation data for this product please contact:

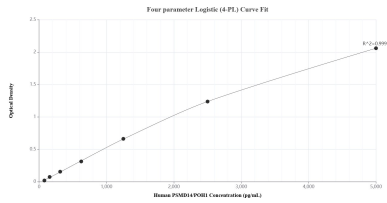
T: 1 (888) 4PTGLAB (1-888-478-4522) (toll free in USA), or 1(312) 455-8498 (outside USA)

E: proteintech@ptglab.com

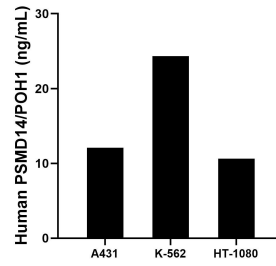
W: ptglab.com

This product is exclusively available under Proteintech Group brand and is not available to purchase from any other manufacturer.

Selected Validation Data



Sandwich ELISA standard curve of MP01566-3, Human PSMD14/POH1 Recombinant Matched Antibody Pair - PBS only. 84767-1-PBS was coated to a plate as the capture antibody and incubated with serial dilutions of standard Ag2694. 84767-3-PBS was HRP conjugated as the detection antibody. Range: 78.1-5000 pg/mL



The mean PSMD14/POH1 concentration was determined to be 12.08 ng/mL in A431 cell extract based on a 1.30 mg/mL extract load, 24.32 ng/mL in K-562 cell extract based on a 2.40 mg/mL extract load and 10.64 ng/mL in HT-1080 cell extract based on a 1.40 mg/mL extract load.