

For Research Use Only

# APOE Recombinant Matched Antibody Pair, PBS Only



Catalog Number:MP01558-3

## Capture Antibody Information

**Catalog Number:**  
84775-5-PBS  
**Host:**  
Rabbit  
**Isotype:**  
IgG  
**Purification Method:**  
Protein A purification

**Clone ID:**  
242310B5  
**Reactivity:**  
human

**Conjugate:**  
Unconjugated  
**Full name:**  
Apolipoprotein E  
**Gene ID:**  
348

## Detection Antibody Information

**Catalog Number:**  
84775-4-PBS  
**Host:**  
Rabbit  
**Isotype:**  
IgG  
**Purification Method:**  
Protein A purification

**Clone ID:**  
242310A3  
**Reactivity:**  
human  
**GenBank:**  
BC003557

**Conjugate:**  
Unconjugated  
**Full name:**  
Apolipoprotein E  
**Gene ID:**  
348

## Applications

**Tested Applications:**  
Sandwich ELISA

**Range:**  
0.313-10 ng/mL (Sandwich ELISA)

**Recommended Dilutions:**  
It is recommended that this reagent should be titrated in each testing system to obtain optimal results.

## Product Information

MP01558-3 targets APOE in immunoassays as a matched antibody pair. Validated in Sandwich ELISA.

Capture antibody: APOE Recombinant antibody, PBS Only (Capture) 84775-5-PBS (242310B5). 100 µg. Concentration 1 mg/ml.

Detection antibody: APOE Recombinant antibody, PBS Only (Detector) 84775-4-PBS (242310A3). 100 µg. Concentration 1 mg/ml.

Unconjugated rabbit recombinant monoclonal antibody pair in PBS only storage buffer at a concentration of 1 mg/mL, ready for conjugation. Created using Proteintech's proprietary in-house recombinant technology. Recombinant production enables unrivalled batch-to-batch consistency, easy scale-up, and future security of supply.

Matched antibody pairs are designed for use in a variety of assays and platforms that require matched antibody pairs.

Antibody use should be optimized for each application and assay.

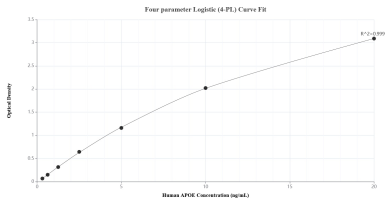
## Storage

**Storage:**  
Store at -80°C.  
**Storage buffer:**  
PBS only

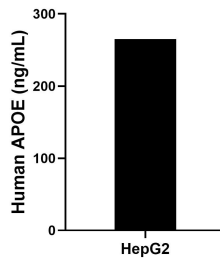
For technical support and original validation data for this product please contact:  
T: 1 (888) 4PTGLAB (1-888-478-4522) (toll free in USA), or 1(312) 455-8498 (outside USA) E: proteintech@ptglab.com W: ptglab.com

This product is exclusively available under Proteintech Group brand and is not available to purchase from any other manufacturer.

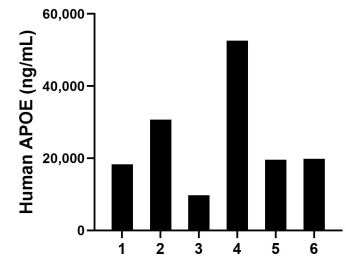
## Selected Validation Data



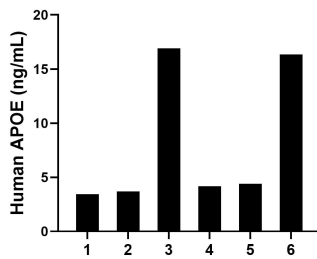
Sandwich ELISA standard curve of MP01558-3, Human APOE Recombinant Matched Antibody Pair - PBS only. 84775-5-PBS was coated to a plate as the capture antibody and incubated with serial dilutions of standard Eg0448. 84775-4-PBS was HRP conjugated as the detection antibody. Range: 0.313-10 ng/mL



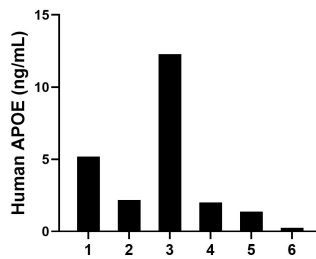
HepG2 were cultured in DMEM supplemented with 10% fetal bovine serum, 2.5 mM L-glutamine, 100 U/mL penicillin, and 100 µg/mL streptomycin sulfate. An aliquot of the cell culture supernate was removed, assayed for human APOE, and measured 264.90 ng/mL



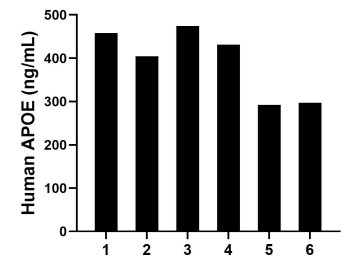
Serum of six individual healthy human donors was measured. The APOE concentration of detected samples was determined to be 25,140.92 ng/mL with a range of 9,706.32-52,603.90 ng/mL



Saliva of six individual healthy human donors was measured. The APOE concentration of detected samples was determined to be 8.16 ng/mL with a range of 3.43-16.91 ng/mL



Urine of six individual healthy human donors was measured. The APOE concentration of detected samples was determined to be 3.88 ng/mL with a range of 0.26-12.28 ng/mL



Human milk of six individual healthy human donors was measured. The APOE concentration of detected samples was determined to be 392.90 ng/mL with a range of 291.94-474.33 ng/mL