

For Research Use Only

RAB21 Recombinant Matched Antibody Pair, PBS Only



Catalog Number:MP01552-1

Capture Antibody Information

Catalog Number:
84776-3-PBS

Host:
Rabbit

Isotype:
IgG

Purification Method:
Protein A purification

Clone ID:
242117C6

Reactivity:
human

Immunogen Catalog Number:
Ag35291

Conjugate:
Unconjugated

Full name:
RAB21, member RAS oncogene family

Gene ID:
23011

Detection Antibody Information

Catalog Number:
84776-4-PBS

Host:
Rabbit

Isotype:
IgG

Purification Method:
Protein A purification

Clone ID:
242117E9

Reactivity:
human

GenBank:
NM_014999

Immunogen Catalog Number:
Ag35291

Conjugate:
Unconjugated

Full name:
RAB21, member RAS oncogene family

Gene ID:
23011

Applications

Tested Applications:
Cytometric bead array, Sandwich ELISA

Range:
0.625-80 ng/mL (Cytometric Bead Array)
39.1-2500 pg/mL (Sandwich ELISA)

Recommended Dilutions:
It is recommended that this reagent should be titrated in each testing system to obtain optimal results.

Product Information

MP01552-1 targets RAB21 in immunoassays as a matched antibody pair. Validated in Cytometric bead array, Sandwich ELISA.

Capture antibody: RAB21 Recombinant antibody, PBS Only (Capture) 84776-3-PBS (242117C6). 100 µg. Concentration 1 mg/ml.

Detection antibody: RAB21 Recombinant antibody, PBS Only (Detector) 84776-4-PBS (242117E9). 100 µg. Concentration 1 mg/ml.

Unconjugated rabbit recombinant monoclonal antibody pair in PBS only storage buffer at a concentration of 1 mg/mL, ready for conjugation. Created using Proteintech's proprietary in-house recombinant technology. Recombinant production enables unrivalled batch-to-batch consistency, easy scale-up, and future security of supply.

Matched antibody pairs are designed for use in a variety of assays and platforms that require matched antibody pairs.

Antibody use should be optimized for each application and assay.

Storage

Storage:
Store at -80°C.
Storage buffer:
PBS only

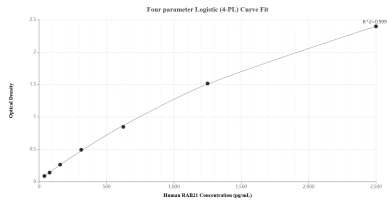
For technical support and original validation data for this product please contact:

T: 1 (888) 4PTGLAB (1-888-478-4522) (toll free in USA), or 1(312) 455-8498 (outside USA)

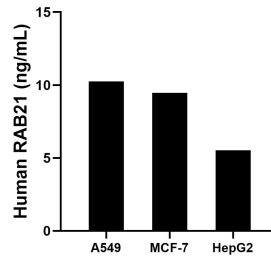
E: proteintech@ptglab.com
W: ptglab.com

This product is exclusively available under Proteintech Group brand and is not available to purchase from any other manufacturer.

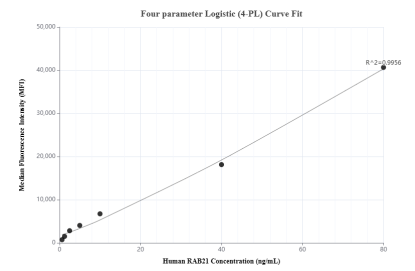
Selected Validation Data



Sandwich ELISA standard curve of MP01552-1, Human RAB21 Recombinant Matched Antibody Pair - PBS only. 84776-3-PBS was coated to a plate as the capture antibody and incubated with serial dilutions of standard Ag35291. 84776-4-PBS was HRP conjugated as the detection antibody. Range: 39.1-2500 pg/mL



The mean RAB21 concentration was determined to be 10.3 ng/mL in A549 cell extract based on a 2.5 mg/mL extract load, 9.5 ng/mL in MCF-7 cell extract based on a 1.2 mg/mL extract load and 5.5 ng/mL in HepG2 cell extract based on a 2.3 mg/mL extract load.



Cytometric bead array standard curve of MP01552-1, RAB21 Recombinant Matched Antibody Pair, PBS Only. Capture antibody: 84776-3-PBS. Detection antibody: 84776-4-PBS. Standard: Ag35291. Range: 0.625-80 ng/mL