

For Research Use Only



TOLLIP Recombinant Matched Antibody Pair, PBS Only

Catalog Number:MP01524-2

Capture Antibody Information

Catalog Number:
84711-2-PBS

Host:
Rabbit

Isotype:
IgG

Purification Method:
Protein A purification

Clone ID:
242098B2

Reactivity:
human

Immunogen Catalog Number:
Ag1864

Conjugate:
Unconjugated

Full name:
toll interacting protein

Gene ID:
54472

Detection Antibody Information

Catalog Number:
84711-1-PBS

Host:
Rabbit

Isotype:
IgG

Purification Method:
Protein A purification

Clone ID:
242098A7

Reactivity:
human

GenBank:
BC012057

Immunogen Catalog Number:
Ag1864

Conjugate:
Unconjugated

Full name:
toll interacting protein

Gene ID:
54472

Applications

Tested Applications:
Cytometric bead array, Sandwich ELISA

Range:
0.469-60 ng/mL (Cytometric Bead Array)
0.391-25 ng/mL (Sandwich ELISA)

Recommended Dilutions:
It is recommended that this reagent should be titrated in each testing system to obtain optimal results.

Product Information

MP01524-2 targets TOLLIP in immunoassays as a matched antibody pair. Validated in Cytometric bead array, Sandwich ELISA.

Capture antibody: TOLLIP Recombinant antibody, PBS Only (Capture) 84711-2-PBS (242098B2). 100 µg. Concentration 1 mg/ml.

Detection antibody: TOLLIP Recombinant antibody, PBS Only (Detector) 84711-1-PBS (242098A7). 100 µg. Concentration 1 mg/ml.

Unconjugated rabbit recombinant monoclonal antibody pair in PBS only storage buffer at a concentration of 1 mg/mL, ready for conjugation. Created using Proteintech's proprietary in-house recombinant technology. Recombinant production enables unrivalled batch-to-batch consistency, easy scale-up, and future security of supply.

Matched antibody pairs are designed for use in a variety of assays and platforms that require matched antibody pairs.

Antibody use should be optimized for each application and assay.

Storage

Storage:
Store at -80°C.
Storage buffer:
PBS only

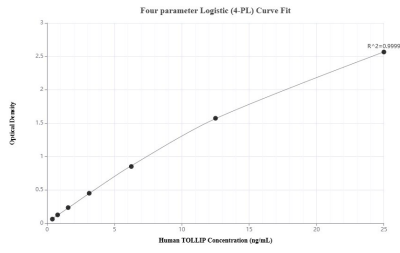
For technical support and original validation data for this product please contact:

T: 1 (888) 4PTGLAB (1-888-478-4522) (toll free in USA), or 1(312) 455-8498 (outside USA)

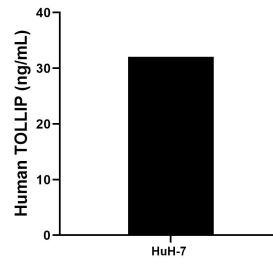
E: proteintech@ptglab.com
W: ptglab.com

This product is exclusively available under Proteintech Group brand and is not available to purchase from any other manufacturer.

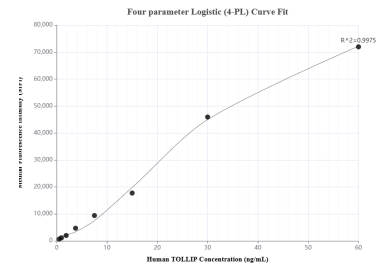
Selected Validation Data



Sandwich ELISA standard curve of MP01524-2, Human TOLLIP Recombinant Matched Antibody Pair - PBS only. 84711-2-PBS was coated to a plate as the capture antibody and incubated with serial dilutions of standard Ag1864. 84711-1-PBS was HRP conjugated as the detection antibody. Range: 0.391-25 ng/mL



The mean TOLLIP concentration was determined to be 32.07 ng/mL in HuH-7 cell extract based on a 1.4 mg/mL extract load.



Cytometric bead array standard curve of MP01524-2, TOLLIP Recombinant Matched Antibody Pair, PBS Only. Capture antibody: 84711-2-PBS. Detection antibody: 84711-1-PBS. Standard: Ag1864. Range: 0.469-60 ng/mL