

For Research Use Only

WAS Recombinant Matched Antibody Pair, PBS Only



Catalog Number:MP01520-2

Capture Antibody Information

Catalog Number:
84714-1-PBS
Host:
Rabbit
Isotype:
IgG
Purification Method:
Protein A purification

Clone ID:
242074A9
Reactivity:
human
Immunogen Catalog Number:
Ag1444

Conjugate:
Unconjugated
Full name:
Wiskott-Aldrich syndrome (eczema-thrombocytopenia)
Gene ID:
7454

Detection Antibody Information

Catalog Number:
84714-3-PBS
Host:
Rabbit
Isotype:
IgG
Purification Method:
Protein A purification

Clone ID:
242074H3
Reactivity:
human
GenBank:
BC012738
Immunogen Catalog Number:
Ag1444

Conjugate:
Unconjugated
Full name:
Wiskott-Aldrich syndrome (eczema-thrombocytopenia)
Gene ID:
7454

Applications

Tested Applications:
Cytometric bead array

Range:
0.625-80 ng/mL (Cytometric Bead Array)

Recommended Dilutions:
It is recommended that this reagent should be titrated in each testing system to obtain optimal results.

Product Information

MP01520-2 targets WAS in immunoassays as a matched antibody pair. Validated in Cytometric bead array.
Capture antibody: WAS Recombinant antibody, PBS Only (Capture) 84714-1-PBS (242074A9). 100 µg. Concentration 1 mg/ml.
Detection antibody: WAS Recombinant antibody, PBS Only (Detector) 84714-3-PBS (242074H3). 100 µg. Concentration 1 mg/ml.
Alternative WAS matched antibody pairs: MP01520-1
Unconjugated rabbit recombinant monoclonal antibody pair in PBS only storage buffer at a concentration of 1 mg/mL, ready for conjugation. Created using Proteintech's proprietary in-house recombinant technology. Recombinant production enables unrivalled batch-to-batch consistency, easy scale-up, and future security of supply. Matched antibody pairs are designed for use in a variety of assays and platforms that require matched antibody pairs.
Antibody use should be optimized for each application and assay.

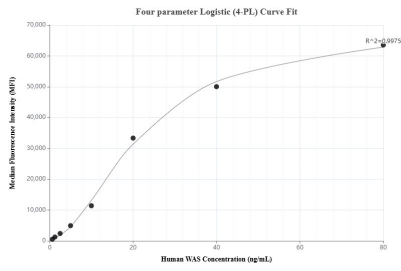
Storage

Storage:
Store at -80°C.
Storage buffer:
PBS only

For technical support and original validation data for this product please contact:
T: 1 (888) 4PTGLAB (1-888-478-4522) (toll free in USA), or 1(312) 455-8498 (outside USA) E: proteintech@ptglab.com W: ptglab.com

This product is exclusively available under Proteintech Group brand and is not available to purchase from any other manufacturer.

Selected Validation Data



Cytometric bead array standard curve of MP01520-2, WASP Recombinant Matched Antibody Pair, PBS Only. Capture antibody: 84714-1-PBS. Detection antibody: 84714-3-PBS. Standard: Ag1444. Range: 0.625-80 ng/mL