

For Research Use Only

KLKB1 Recombinant Matched Antibody Pair, PBS Only



Catalog Number:MP01518-3

Capture Antibody Information

Catalog Number:
84726-2-PBS
Host:
Rabbit
Isotype:
IgG
Purification Method:
Protein A purification

Clone ID:
242019F1
Reactivity:
human

Conjugate:
Unconjugated
Full name:
kallikrein B, plasma (Fletcher factor)
1
Gene ID:
3818

Detection Antibody Information

Catalog Number:
84726-1-PBS
Host:
Rabbit
Isotype:
IgG
Purification Method:
Protein A purification

Clone ID:
242019E10
Reactivity:
human
GenBank:

Conjugate:
Unconjugated
Full name:
kallikrein B, plasma (Fletcher factor)
1
Gene ID:
3818

Applications

Tested Applications:
Sandwich ELISA

Range:
78.1-5000 pg/mL (Sandwich ELISA)

Recommended Dilutions:
It is recommended that this reagent should be titrated in each testing system to obtain optimal results.

Product Information

MP01518-3 targets KLKB1 in immunoassays as a matched antibody pair. Validated in Sandwich ELISA.

Capture antibody: Plasma kallikrein/KLKB1 Recombinant antibody, PBS Only (Capture) 84726-2-PBS (242019F1). 100 µg. Concentration 1 mg/ml.

Detection antibody: Plasma kallikrein/KLKB1 Recombinant antibody, PBS Only (Capture/Detector) 84726-1-PBS (242019E10). 100 µg. Concentration 1 mg/ml.

Unconjugated rabbit recombinant monoclonal antibody pair in PBS only storage buffer at a concentration of 1 mg/mL, ready for conjugation. Created using Proteintech's proprietary in-house recombinant technology. Recombinant production enables unrivalled batch-to-batch consistency, easy scale-up, and future security of supply.

Matched antibody pairs are designed for use in a variety of assays and platforms that require matched antibody pairs.

Antibody use should be optimized for each application and assay.

Storage

Storage:
Store at -80°C.
Storage buffer:
PBS only

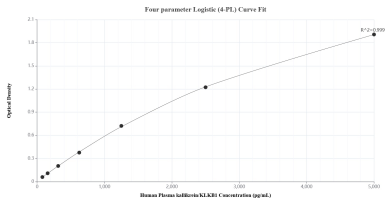
For technical support and original validation data for this product please contact:

T: 1 (888) 4PTGLAB (1-888-478-4522) (toll free in USA), or 1(312) 455-8498 (outside USA)

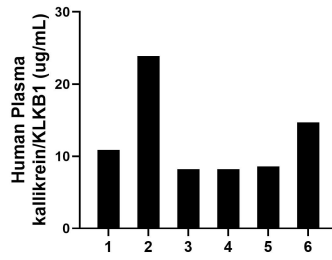
E: proteintech@ptglab.com
W: ptglab.com

This product is exclusively available under Proteintech Group brand and is not available to purchase from any other manufacturer.

Selected Validation Data



Sandwich ELISA standard curve of MP01518-3, Human Plasma KLKB1 Recombinant Matched Antibody Pair - PBS only. 84726-2-PBS was coated to a plate as the capture antibody and incubated with serial dilutions of standard Eg1163. 84726-1-PBS was HRP conjugated as the detection antibody. Range: 78.1-5000 pg/mL



Serum of six individual healthy human donors was measured. The Plasma KLKB1 concentration of detected samples was determined to be 12.4 ug/mL with a range of 8.2-23.9 ug/mL.