

For Research Use Only



# Plasma kallikrein/KLKB1 Recombinant Matched Antibody Pair, PBS Only

Catalog Number:MP01518-2

## Capture Antibody Information

**Catalog Number:**  
84726-1-PBS  
**Host:**  
Rabbit  
**Isotype:**  
IgG  
**Purification Method:**  
Protein A purification

**Clone ID:**  
242019E10  
**Reactivity:**  
human

**Conjugate:**  
Unconjugated  
**Full name:**  
kallikrein B, plasma (Fletcher factor)  
1  
**Gene ID:**  
3818

## Detection Antibody Information

**Catalog Number:**  
84726-3-PBS  
**Host:**  
Rabbit  
**Isotype:**  
IgG  
**Purification Method:**  
Protein A purification

**Clone ID:**  
242019G12  
**Reactivity:**  
human  
**GenBank:**

**Conjugate:**  
Unconjugated  
**Full name:**  
kallikrein B, plasma (Fletcher factor)  
1  
**Gene ID:**  
3818

## Applications

**Tested Applications:**  
Cytometric bead array

**Range:**  
0.625-80 ng/mL (Cytometric Bead Array)

**Recommended Dilutions:**  
It is recommended that this reagent should be titrated in each testing system to obtain optimal results.

## Product Information

MP01518-2 targets Plasma kallikrein/KLKB1 in immunoassays as a matched antibody pair. Validated in Cytometric bead array.

Capture antibody: Plasma kallikrein/KLKB1 Recombinant antibody, PBS Only (Capture) 84726-1-PBS (242019E10). 100 µg. Concentration 1 mg/ml.

Detection antibody: Plasma kallikrein/KLKB1 Recombinant antibody, PBS Only (Detector) 84726-3-PBS (242019G12). 100 µg. Concentration 1 mg/ml.

Alternative Plasma kallikrein/KLKB1 matched antibody pairs: MP01518-1

Unconjugated rabbit recombinant monoclonal antibody pair in PBS only storage buffer at a concentration of 1 mg/mL, ready for conjugation. Created using Proteintech's proprietary in-house recombinant technology. Recombinant production enables unrivalled batch-to-batch consistency, easy scale-up, and future security of supply.

Matched antibody pairs are designed for use in a variety of assays and platforms that require matched antibody pairs.

Antibody use should be optimized for each application and assay.

## Storage

**Storage:**  
Store at -80°C.  
**Storage buffer:**  
PBS only

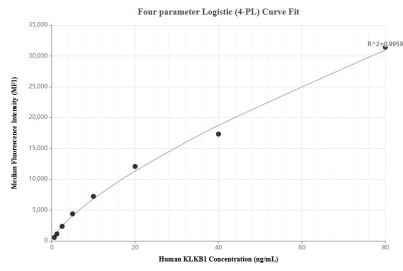
For technical support and original validation data for this product please contact:

T: 1 (888) 4PTGLAB (1-888-478-4522) (toll free in USA), or 1(312) 455-8498 (outside USA)

E: proteintech@ptglab.com  
W: ptglab.com

This product is exclusively available under Proteintech Group brand and is not available to purchase from any other manufacturer.

## Selected Validation Data



Cytometric bead array standard curve of MP01518-2, KLKB1 Recombinant Matched Antibody Pair, PBS Only. Capture antibody: 84726-1-PBS. Detection antibody: 84726-3-PBS. Standard: Eg1163. Range: 0.625-80 ng/mL