

For Research Use Only



Plasma kallikrein/KLKB1 Recombinant Matched Antibody Pair, PBS Only

Catalog Number: MP01518-1

Capture Antibody Information

Catalog Number:
84726-2-PBS
Host:
Rabbit
Isotype:
IgG
Purification Method:
Protein A purification

Clone ID:
242019F1
Reactivity:
human

Conjugate:
Unconjugated
Full name:
kallikrein B, plasma (Fletcher factor)
1
Gene ID:
3818

Detection Antibody Information

Catalog Number:
84726-3-PBS
Host:
Rabbit
Isotype:
IgG
Purification Method:
Protein A purification

Clone ID:
242019G12
Reactivity:
human
GenBank:

Conjugate:
Unconjugated
Full name:
kallikrein B, plasma (Fletcher factor)
1
Gene ID:
3818

Applications

Tested Applications:
Cytometric bead array

Range:
0.625-80 ng/mL (Cytometric Bead Array)

Recommended Dilutions:
It is recommended that this reagent should be titrated in each testing system to obtain optimal results.

Product Information

MP01518-1 targets Plasma kallikrein/KLKB1 in immunoassays as a matched antibody pair. Validated in Cytometric bead array.

Capture antibody: Plasma kallikrein/KLKB1 Recombinant antibody, PBS Only (Capture) 84726-2-PBS (242019F1). 100 µg. Concentration 1 mg/ml.

Detection antibody: Plasma kallikrein/KLKB1 Recombinant antibody, PBS Only (Detector) 84726-3-PBS (242019G12). 100 µg. Concentration 1 mg/ml.

Alternative Plasma kallikrein/KLKB1 matched antibody pairs: MP01518-2

Unconjugated rabbit recombinant monoclonal antibody pair in PBS only storage buffer at a concentration of 1 mg/mL, ready for conjugation. Created using Proteintech's proprietary in-house recombinant technology. Recombinant production enables unrivalled batch-to-batch consistency, easy scale-up, and future security of supply.

Matched antibody pairs are designed for use in a variety of assays and platforms that require matched antibody pairs.

Antibody use should be optimized for each application and assay.

Storage

Storage:
Store at -80°C.
Storage buffer:
PBS only

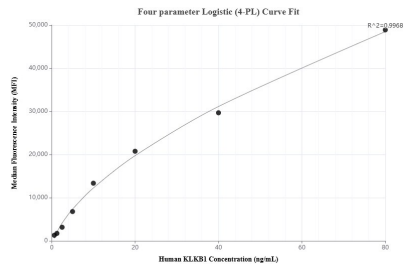
For technical support and original validation data for this product please contact:

T: 1 (888) 4PTGLAB (1-888-478-4522) (toll free in USA), or 1(312) 455-8498 (outside USA)

E: proteintech@ptglab.com
W: ptglab.com

This product is exclusively available under Proteintech Group brand and is not available to purchase from any other manufacturer.

Selected Validation Data



Cytometric bead array standard curve of MP01518-1, KLKB1 Recombinant Matched Antibody Pair, PBS Only. Capture antibody: 84726-2-PBS. Detection antibody: 84726-3-PBS. Standard: Eg1163. Range: 0.625-80 ng/mL