

For Research Use Only

C3orf37 Recombinant Matched Antibody Pair, PBS Only



Catalog Number:MP01472-2

Capture Antibody Information

Catalog Number:
84660-1-PBS

Host:
Rabbit

Isotype:
IgG

Purification Method:
Protein A purification

Clone ID:
242156A1

Reactivity:
human

Immunogen Catalog Number:
Ag36362

Conjugate:
Unconjugated

Full name:
chromosome 3 open reading frame 37

Gene ID:
56941

Detection Antibody Information

Catalog Number:
84660-3-PBS

Host:
Rabbit

Isotype:
IgG

Purification Method:
Protein A purification

Clone ID:
242156E1

Reactivity:
human

GenBank:
BC009993

Immunogen Catalog Number:
Ag36362

Conjugate:
Unconjugated

Full name:
chromosome 3 open reading frame 37

Gene ID:
56941

Applications

Tested Applications:
Cytometric bead array

Range:
0.781-100 ng/mL (Cytometric Bead Array)

Recommended Dilutions:
It is recommended that this reagent should be titrated in each testing system to obtain optimal results.

Product Information

MP01472-2 targets C3orf37 in immunoassays as a matched antibody pair. Validated in Cytometric bead array.

Capture antibody: C3orf37 Recombinant antibody, PBS Only (Capture) 84660-1-PBS (242156A1). 100 µg. Concentration 1 mg/ml.

Detection antibody: C3orf37 Recombinant antibody, PBS Only (Detector) 84660-3-PBS (242156E1). 100 µg. Concentration 1 mg/ml.

Alternative C3orf37 matched antibody pairs: MP01472-1

Unconjugated rabbit recombinant monoclonal antibody pair in PBS only storage buffer at a concentration of 1 mg/mL, ready for conjugation. Created using Proteintech's proprietary in-house recombinant technology. Recombinant production enables unrivalled batch-to-batch consistency, easy scale-up, and future security of supply.

Matched antibody pairs are designed for use in a variety of assays and platforms that require matched antibody pairs.

Antibody use should be optimized for each application and assay.

Storage

Storage:
Store at -80°C.
Storage buffer:
PBS only

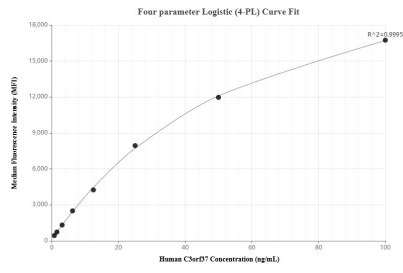
For technical support and original validation data for this product please contact:

T: 1 (888) 4PTGLAB (1-888-478-4522) (toll free in USA), or 1(312) 455-8498 (outside USA)

E: proteintech@ptglab.com
W: ptglab.com

This product is exclusively available under Proteintech Group brand and is not available to purchase from any other manufacturer.

Selected Validation Data



Cytometric bead array standard curve of MP01472-2, C3orf37 Recombinant Matched Antibody Pair, PBS Only. Capture antibody: 84660-1-PBS. Detection antibody: 84660-3-PBS. Standard: Ag36362. Range: 0.781-100 ng/mL.